



SOUTHERN SYDNEY FREIGHT LINE PROJECT

MACARTHUR TO SEFTON

Background

The Australian Rail Track Corporation (ARTC) is planning to improve rail freight services in NSW, by building a new dedicated freight line from south of Macarthur Station to east of Sefton Station within the existing corridor. Freight trains currently share the rail lines with passenger trains in this section. Passenger trains have priority during peak commuter periods, creating significant bottlenecks for freight operations between Melbourne–Sydney and Melbourne–Brisbane.

Eliminating the bottleneck for freight operations on the passenger network would enable ARTC to:

- improve reliability and travel times for freight services between Melbourne–Sydney and Melbourne–Brisbane;
- improve rail freight service competitiveness compared to road freight service; and
- reduce delays to passenger services resulting from conflicts with freight operations.

The Southern Sydney Freight Line (SSFL) Project includes:

- a new 36-kilometre non-electrified single freight track next to the Main South Line from south of Macarthur Station to east of Sefton Station (see Figure 1);
- modification of six existing suburban rail stations including Leumeah, Minto, Casula, Warwick Farm, Cabramatta and Sefton, and surrounding precincts. It is possible Macquarie Fields Station would also require modification;
- construction of a rail bridge crossing over the passenger lines north of Glenfield to take the freight line onto the eastern side of the passenger rail network;

- modification of existing road bridges, including those at Bareena Street, Miller Road and Chester Hill Road;
- construction of a rail tunnel under Sefton junction (east of Sefton Station);
- construction of bridges, retaining walls, cuttings and embankments; and
- impact mitigation measures, such as noise walls and landscaping where required.

Figure 1 shows the location of the proposal and the rail stations that would require modification.

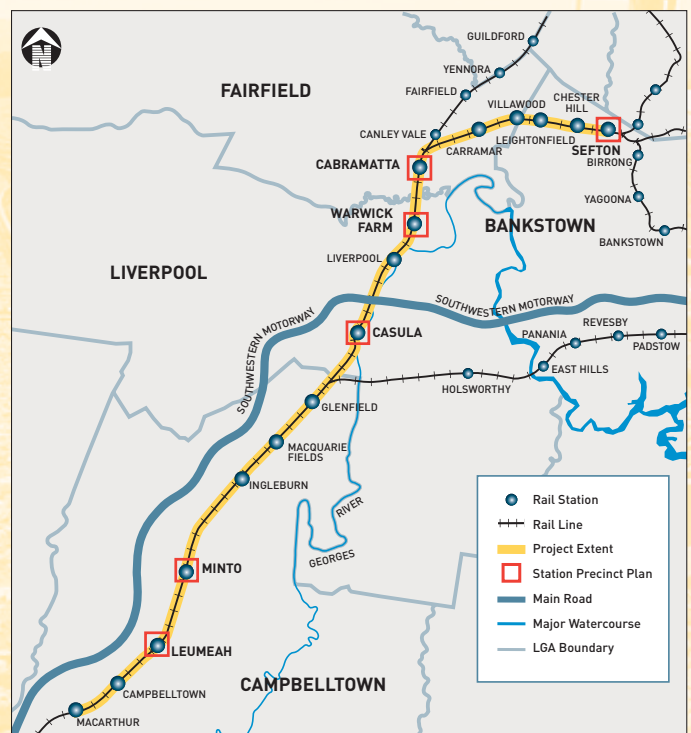


Figure 1 The Proposal

(toll free)

1800 998 781

Project Information Line



ARTC

SOUTHERN SYDNEY FREIGHT LINE PROJECT

MACARTHUR TO SEFTON



Environmental Impact Assessment

ARTC has employed Parsons Brinckerhoff to undertake an environmental impact assessment in accordance with the Environmental Planning and Assessment Act 1979.

An Environmental Impact Statement (EIS) will be produced that describes the proposal in detail, its method of construction, the associated environmental impacts and management of those impacts. The environmental impact assessment process will involve consultation with the community and other stakeholders.

There are a number of environmental, social and economic investigations that will be undertaken as part of the environmental impact assessment. Some of the investigations include:

- Traffic and Transport
- Geology and Soils
- Noise and Vibration
- Ground and Surface Water
- Urban Design, Visual and Landscape
- Flora and Fauna
- Contamination/Hazardous Materials and Waste
- Air Quality
- Non-Indigenous Heritage
- Indigenous Heritage
- Land Use Planning, Social and Property
- Hazard and Risk

(toll free)

1800 998 781

Project Information Line



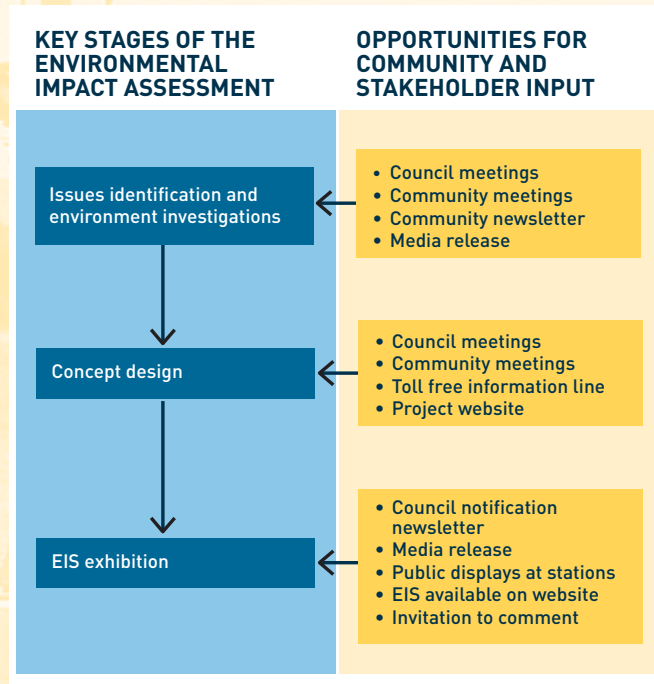
SOUTHERN SYDNEY FREIGHT LINE PROJECT

MACARTHUR TO SEFTON

Have Your Say and Get Involved

Ongoing community and stakeholder input will be an important part of the environmental impact assessment process.

The following diagram explains the process and the key stages where community and stakeholder input will be integrated into the concept design of the proposal.



Comments that are submitted during the EIS exhibition are considered in a Representations Report. This report and the EIS are assessed by the Department of Infrastructure, Planning and Natural Resources, prior to seeking approval from the Minister for Infrastructure and Planning.

ARTC and Parsons Brinckerhoff will be advertising in local newspapers, distributing newsletters, maintaining up-to-date website information and providing a free call 1800 number, so that the community is able to access current and relevant information. Parsons Brinckerhoff will also be maintaining an issues database and a contact database, so that we can keep track of people and their concerns.

You can ensure your involvement by:

- being placed on the mailing list to receive newsletters and other notifications; and
- contacting the study team on free call 1800 998 781.

For further information, you can contact:

Jeremy Mah

Community Liaison Officer
Parsons Brinckerhoff (Aust) Pty Ltd
Locked Bag 248
Rhodes NSW 2138
Phone: 1800 998 781 (toll free)
Fax: 02 9736 1568
E-mail: jmah@pb.com.au

or

Michael Magney

ARTC Project Manager
Level 15, 60 Carrington Street
Sydney NSW 2000
Phone: 02 8259 0727
Fax: 02 9279 4539
E-mail: mmagney@artc.com.au

(toll free) **1800 998 781**
Project Information Line



ARTC

SOUTHERN SYDNEY FREIGHT LINE PROJECT

MACARTHUR TO SEFTON

Multi-lingual Services

The Australian Rail Track Corporation is planning to construct a new 36-kilometre rail freight track (within the rail corridor), from south of Macarthur Station to east of Sefton Station. This will require construction and/or modification of rail bridges, retaining walls and embankments. It will also require modification of existing rail stations at Leumeah, Minto, Casula, Warwick Farm, Cabramatta, Sefton and possibly Macquarie Fields. For more information, you can contact the Translating and Interpreting Service on 131450 and ask an interpreter in your language to contact **Jeremy Mah** (Community Liaison Officer) on (02) 9743 0333.

تخطط شركة الخطوط الحديدية الأسترالية (Australian Rail Track Corporation) لإنشاء خط حديدي جديد لقطارات الشحن يمتد لمسافة 36 كيلومترا داخل الممر الحالي للسكة الحديدية ابتداء من جنوب مكارثر وحتى شرقي محطة قطار سيفتون. وسوف يتطلب ذلك تشييدا وتطويرا للجسور العلوية التي تجري عليها القطارات والجدران العازلة والحواجز. وسوف يشمل ذلك أيضا إجراء تغييرات على محطات القطارات الحالية بمنطقة لوما، مينتو، كاسولا، ووريك فارم، كابراماتا، سيفتون وإحتمالا محطة مكارثر فيلدز. للحصول على مزيد من المعلومات يمكنكم الإتصال بخدمة الترجمة الخطية والشفهية على الرقم 131 450 والطلب من مترجم يتحدث بلغتك أن يتصل بجيرمي ماه (موظف العلاقات العامة) بشركة بارنكر هوف على الرقم (02) 9743 0333.

澳大利亞鐵路公司 (Australian Rail Track Corporation) 計劃建造一條 36 公里長的貨運鐵路 (在鐵路走廊之內)。該鐵路南至 Macarthur 火車站，東至 Sefton 火車站。這項工程需要建造和/或改造鐵路橋、護牆和路基。另外，還需要改造 Leumeah、Minto、Casula、Warwick Farm、Cabramatta 和 Sefton 火車站，甚至可能包括 Macquarie Fields 火車站。如需查詢更多詳情，請致電 131 450，與傳譯服務 (Translating and Interpreting Service) 聯絡，並要求傳譯員協助您與 Parsons Brinckerhoff 公司的 Jeremy Mah 先生 (02) 9743 0333) 通話。Jeremy Mah 先生是社區聯絡主管。

Công Ty Đường Sắt Úc Châu dự kiến sẽ kiến tạo đường rầy xe lửa chờ hàng mới dài 36 cây số (trong phạm vi hành lang đường sắt), từ phía Nam Macarthur đến phía Đông nhà ga Sefton. Công trình này bao gồm việc xây và/hoặc sửa đổi các cây cầu xe lửa, các vách tường và bờ chắn. Ngoài ra chúng tôi còn sửa đổi các nhà ga hiện thời tại Leumeah, Minto, Casula, Warwick Farm, Cabramatta, Sefton và có thể cả Macquarie Fields nữa. Muốn biết thêm chi tiết, quý vị có thể điện thoại cho Dịch Vụ Thông Phiên Dịch qua số 131 450 rồi nhờ thông dịch tiếng Việt liên lạc với Jeremy Mah (Nhân Viên Liên Lạc Công Chúng (Community Liaison Officer) tại Parsons Brinckerhoff qua số (02) 9743 0333.

La Australian Rail Track Corporation planea construir una nueva vía de ferrocarril de carga de 36 kilómetros (dentro del corredor actual), desde el sur de Macarthur hacia el este de la estación ferroviaria Sefton. Esto requerirá la construcción y/o modificación de puentes ferroviarios, muros de contención y taludes. También requerirá la modificación de las estaciones ferroviarias existentes en Leumeah, Minto, Casula, Warwick Farm, Cabramatta, Sefton y, posiblemente, en Macquarie Fields. Para mayor información, comuníquese con el Servicio de Traducción e Interpretación al 131 450 y pida a un intérprete de su idioma que se comuniquen con **Jeremy Mah** (Funcionario de Enlace Comunitario) en Parsons Brinckerhoff al (02) 9743 0333.

L'Australian Rail Track Corporation sta progettando la costruzione di una nuova linea ferroviaria di 36 chilometri destinata al traffico merci (all'interno del corridoio ferroviario), da sud di Macarthur ad est della stazione di Sefton. Questo progetto richiederà la costruzione e/o la modifica di ponti ferroviari, mura di contenimento e terrapieni. Sarà necessario inoltre effettuare delle modifiche alle stazioni ferroviarie esistenti di Leumeah, Minto, Casula, Warwick Farm, Cabramatta, Sefton e forse Macquarie Fields. Per ottenere maggiori informazioni è possibile rivolgersi al Servizio di traduzione e interpretariato chiamando il numero 131 450 e chiedendo ad un interprete della propria lingua di contattare **Jeremy Mah** (funzionario di collegamento con la comunità - Community Liaison Officer) di Parsons Brinckerhoff allo (02) 9743 0333.

(toll free)

1800 998 781

Project Information Line