



AUSTRALIAN RAIL TRACK CORPORATION LTD

Southern Sydney Freight Line IMPORTANT COMMUNITY INFORMATION

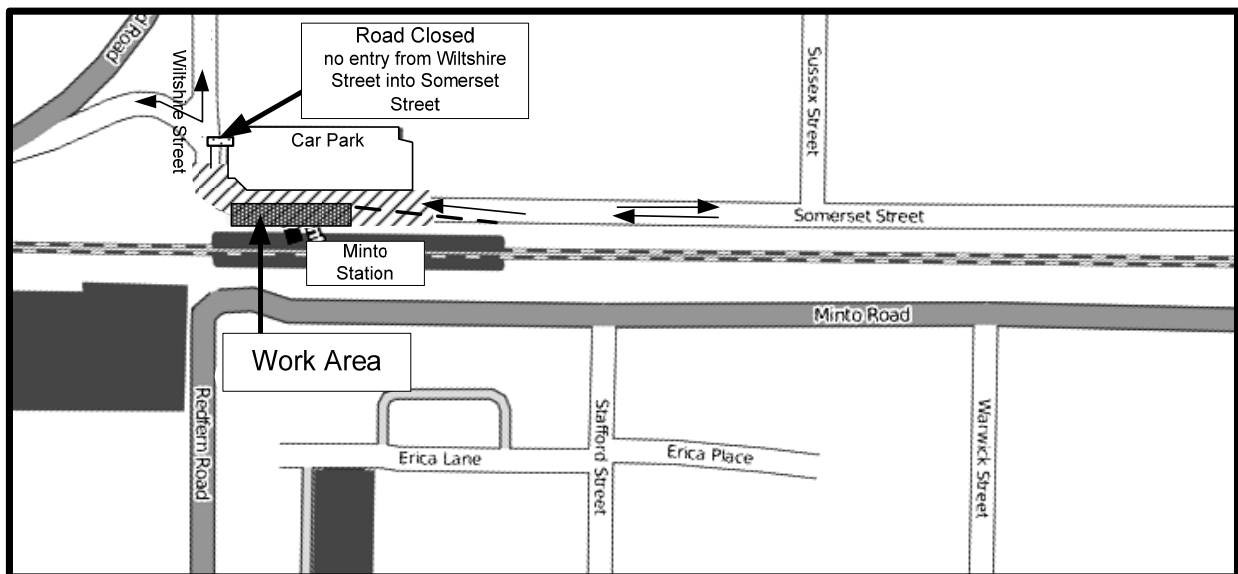
Construction Work at Minto Station

Australian Rail Track Corporation (ARTC) is currently undertaking construction to upgrade Minto Station.

To complete the streetscape works in front of the station, ARTC is required to introduce a one-way traffic system on Somerset Street. On Monday 18 April 2011 the temporary traffic lights will be removed from the corner of Wiltshire Street and Somerset Street and the one way street operation will be put into action until the end of May 2011.

The flow of traffic direction will be south along Somerset Street. There will be no entry from Wiltshire Street into Somerset Street. Outside of this area the current two-way traffic flow will remain as usual, however some delays may occur.

The streetscape work will be undertaken during normal construction hours, 7am to 6pm Monday to Friday, and 8am to 1pm Saturday.



We appreciate your patience while we build this important project for Sydney, NSW and the nation.

For further information please phone our 24 Hour Information and Complaints Line on 1800 182 543 or email ssfl@artc.com.au or visit www.ssfl.artc.com.au



Translating & Interpreting Service – Please Phone: 131 450