



AUSTRALIAN RAIL TRACK CORPORATION LTD

## Southern Sydney Freight Line IMPORTANT COMMUNITY INFORMATION

### Construction Work at Minto Station

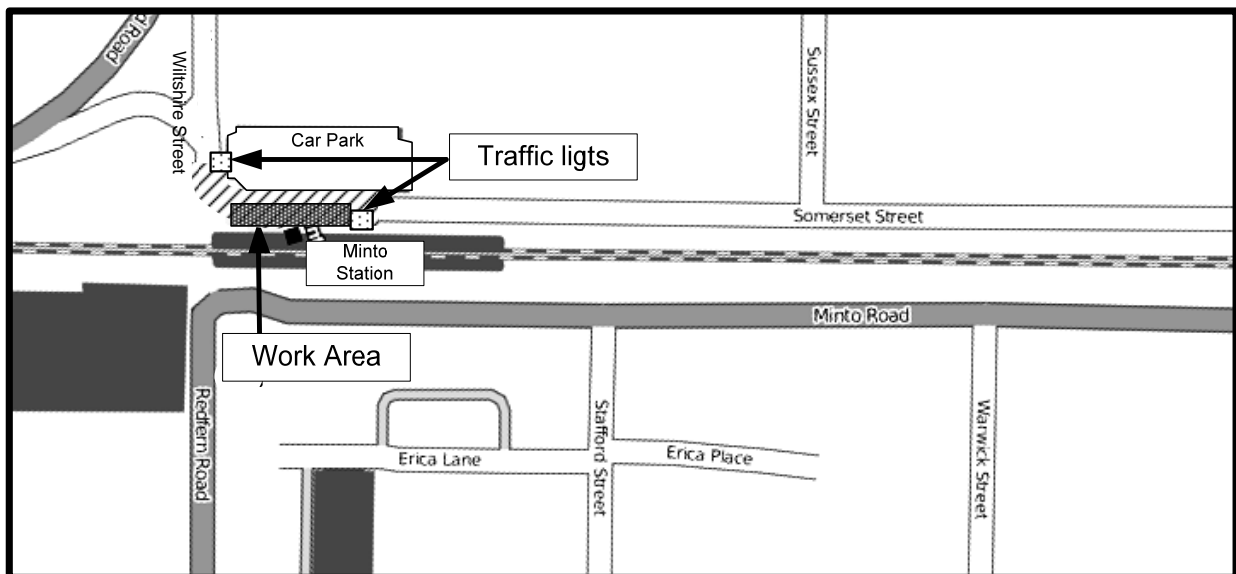
Australian Rail Track Corporation (ARTC) is currently undertaking construction to upgrade Minto Station.

To complete the streetscape works in front of the station, ARTC will be required to introduce a one-way traffic system on Somerset Street. Temporary traffic lights will be set up from the corner of Wiltshire Street to the first bus stop on Somerset Street for the duration of the works. Outside of this area the current two-way traffic flow will remain as usual, however some delays may occur.

The work will be undertaken during normal construction hours, 7am to 6pm Monday to Friday, and 8am to 1pm Saturday. The work will commence on 23 March 2011 and will take approximately four weeks to complete.

The work will consist of kerbing, guttering, installing footpath and street furniture.

The equipment to be used will include an excavator, bogie truck, small truck, concrete truck, road saw, hand saw, brick saw, jackhammer and powered and non-powered hand tools.



We appreciate your patience while we build this important project for Sydney, NSW and the nation.

For further information please phone our 24 Hour Information and Complaints Line on 1800 182 543 or email [ssfl@artc.com.au](mailto:ssfl@artc.com.au) or visit [www.ssfl.artc.com.au](http://www.ssfl.artc.com.au)



Translating & Interpreting Service – Please Phone: 131 450