



AUSTRALIAN RAIL TRACK CORPORATION LTD

Southern Sydney Freight Line IMPORTANT COMMUNITY INFORMATION

Minto to Leumeah - Weekend Works

Australian Rail Track Corporation (ARTC) will be undertaking construction work in your area. These works must be undertaken outside normal construction hours because of the safety risks involved with working in close proximity to overhead power and rail track.

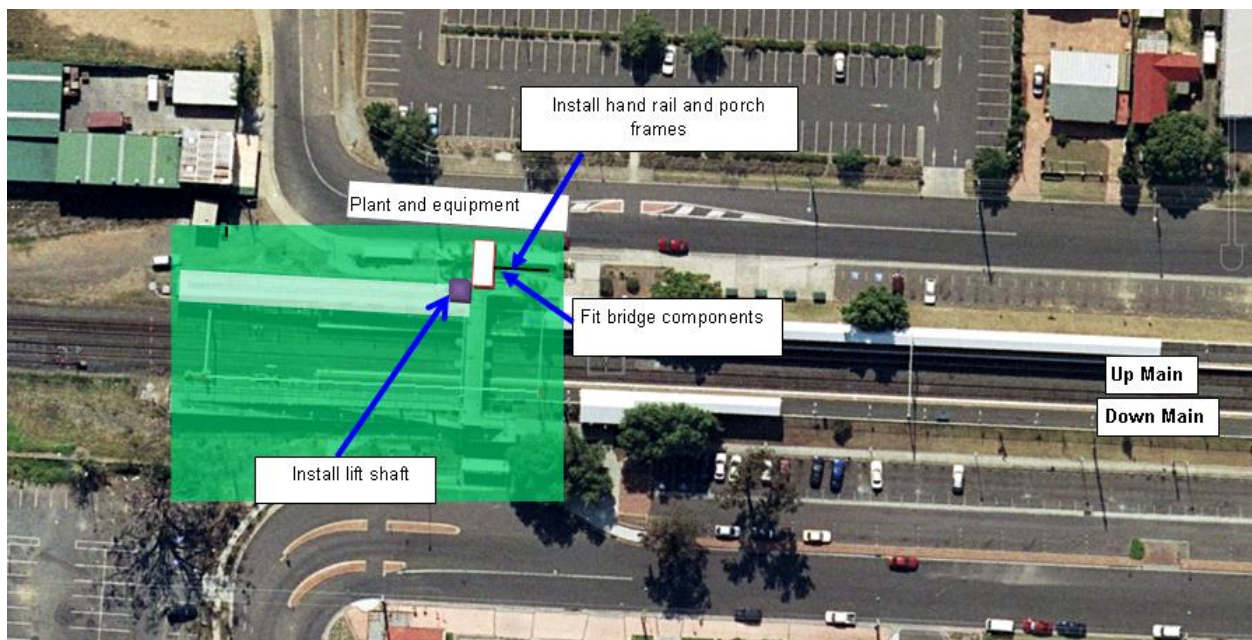
Minto to Leumeah

These works will take place on Sunday 2, Monday 3, Saturday 8, Sunday 9, Saturday 15 and Sunday 16 January 2011 from 7am to 10pm. The works will include relocating optical fibre cable and installing, changing over and commissioning communications cables (Combined Services Route Zone 3) at Minto. The equipment required for these works include site vehicles, winches, and non-powered hand tools including screw drivers, pliers, spanners and splicers.

Minto Station

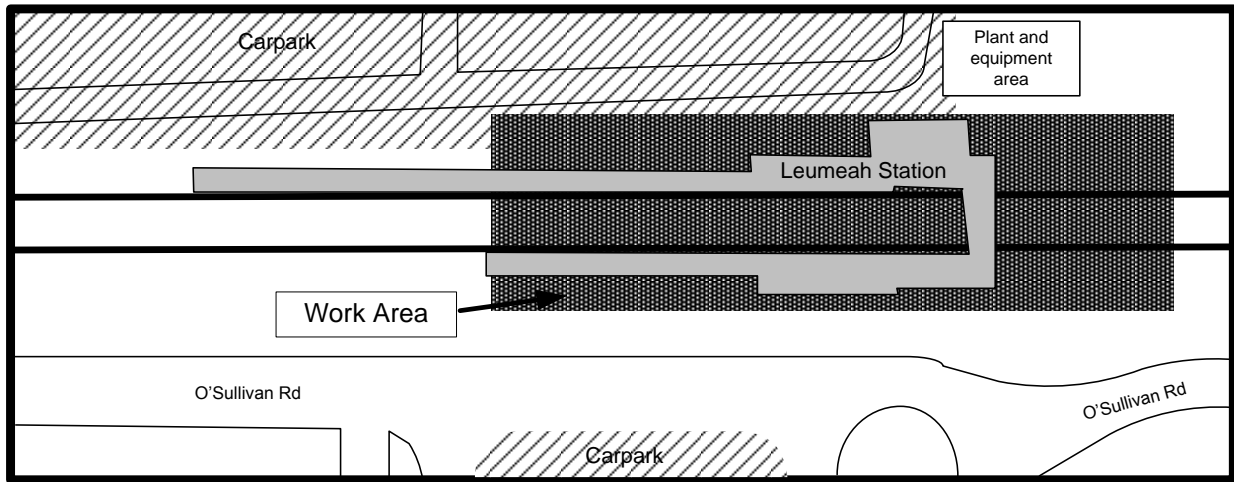
The works will be undertaken on Sunday 2, Sunday 9 and Sunday 16 January from 8am to 5pm and Monday 3, Saturday 8 and Saturday 15 January 2011 from 7am to 5pm. There will be a contingency period for additional works to 7pm on all days between Sunday 2 January to Sunday 16 January 2011.

The works will include completing the Main Switchboard Room; installing landing porches, lift shaft number 2 and trans-floor slabs; drainage works; switching power over; and carpark works. The equipment required for these works include a 200t crane, 20t Franna, scaffolding, generator, oxy sets, delivery truck, and hand tools including an electric drill, hammer drill and power saw.



Leumeah Station

These works will take place on Sunday 2 and Monday 3 January 2011 from 7am to 10pm. The works will include relocating signalling boards; and excavating and backfilling a pit. The equipment required for these works include site vehicles, hi-rail Hiab truck and hand tools including shovels, picks, screw drivers, pliers, spanners, splicers, power saw and hammer drill.



We appreciate your patience while we build this important project for Sydney, NSW and the nation.

For Further information - Please phone our 24 Hour Information and Complaints Line on 1800 182 543 or Email ssfl@artc.com.au or Visit www.ssfl.artc.com.au



Translating & Interpreting Service – **Please Phone:** 131 450