



AUSTRALIAN RAIL TRACK CORPORATION LTD

Southern Sydney Freight Line IMPORTANT COMMUNITY INFORMATION

Construction Works at Woods Road underbridge, Birrong

Australian Rail Track Corporation (ARTC) will be undertaking major construction works to Woods Road underbridge, Birrong, as part of the construction of the Southern Sydney Freight Line (SSFL) Project. The construction works will take approximately three months to complete and will commence from 18 October 2010. The hours of work will be from 7am to 6pm on Monday to Friday, and from 8am to 1pm on Saturday. Traffic control will be in place during these works and will take place in two stages:

Stage 1: Closure of the Western side of Woods Road directly under the rail overpass for the duration of the bridge works. There will be detours in place for north bound traffic, however, south bound traffic will flow normally from Carlingford Street. Pedestrian movements will be impacted during construction works to the west side of the bridge, with signage in place.

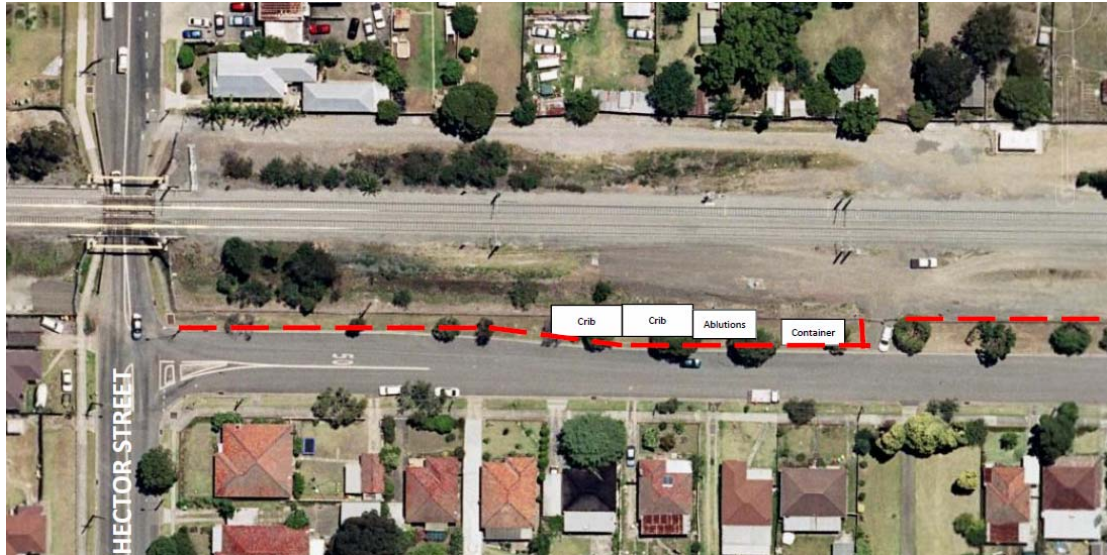
Stage 2: Full Road Closures while the new bridge girders are craned into position. Hours for the full road closure will be from 8pm to 5am over two nights. Roads which will be fully closed are:

- Woods Road between Carlingford Road and Wellington Road
- Wellington Road between Rose Street and Woods Road (Resident only access)
- Wellington Road between Cascoigne Road and Woods Road
- Woods Road between Ernest Street and Wellington Road

There will be detours in place for both north bound and south bound traffic. These nights will not run concurrently with the closures at Hector Street and will take place in January.

Site Compound – Hector Street

A site compound will be set up within the rail corridor on Wellington Road, off Hector Street, Chester Hill. The compound will be set up from 22 September 2010 and completed by 29 September 2010. The hours of work will be from 7am to 6pm on Monday to Friday, and from 8am to 1pm on Saturday. The equipment used will include a Hiab truck to transport sheds and containers, and hand tools and electrical tools to establish electrical and plumbing connections to the site sheds.



Noise mitigation measures will also be in place to minimise any potential disruption to the community.

We appreciate everyone's patience while we build this important project for Sydney, NSW and the nation.

Further information:

Phone 24 Hour Information and **Complaints** Line 1800 182 543
Email ssfl@artc.com.au or Visit www.ssfl.artc.com.au



Translating & Interpreting Service – **Please Phone:** 131 450