



AUSTRALIAN RAIL TRACK CORPORATION LTD

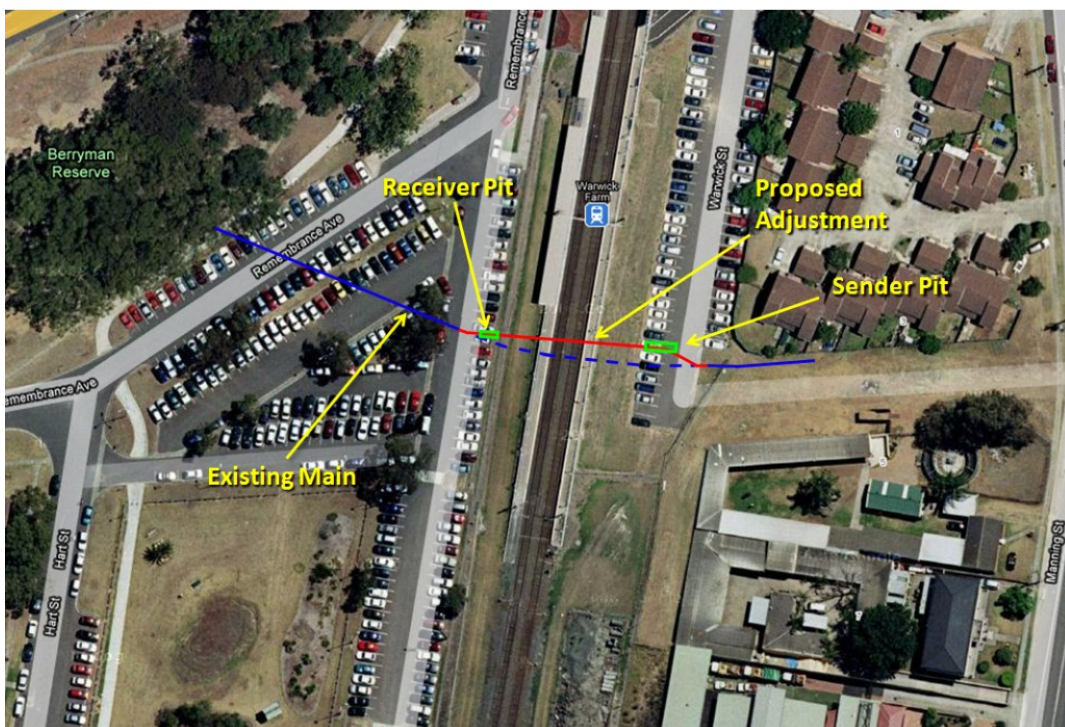
Southern Sydney Freight Line

IMPORTANT COMMUNITY INFORMATION

Sewer Main works – Warwick St to Remembrance Ave, Warwick Farm

Australian Rail Track Corporation (ARTC) will be installing a new Sydney Water (SWC) sewer main from Warwick Street to Remembrance Avenue near Warwick Farm Station underneath the railway line. The works include excavation and trenching to connect the new sewer main to the existing water main. The works will be undertaken from 7am to 6pm from the 8th October 2010 and will continue for approximately 2 weeks. The equipment that will be used include an excavator, welder, jack hammer, concrete mixer, work vehicles and hand tools. There will be traffic controls in place to manage traffic and pedestrian movements around the worksite.

W39 SWC underbore at Remembrance Ave, Warwick Farm Stn



This connection work is required as part of the enabling works to facilitate the construction of the Southern Sydney Freight Line. We appreciate everyone's patience while we build this important project for Sydney, NSW and the nation.

Further information: Phone 24 Hour Information and **Complaints** Line 1800 182 543

Email ssfl@artc.com.au or Visit www.ssfl.artc.com.au



Translating & Interpreting Service – **Please Phone:** 131 450