



AUSTRALIAN RAIL TRACK CORPORATION LTD

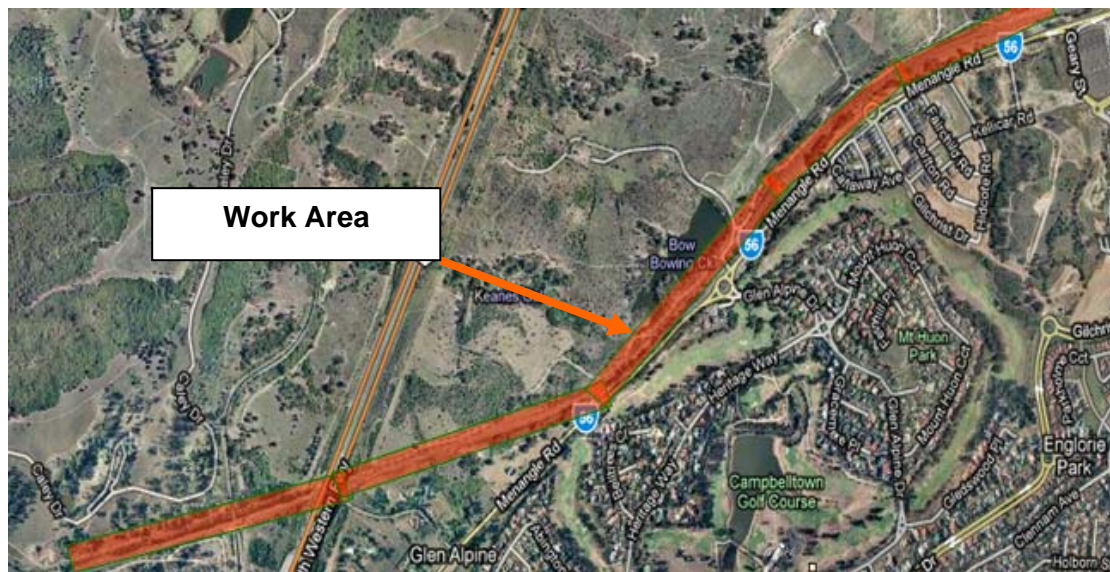
Southern Sydney Freight Line IMPORTANT COMMUNITY INFORMATION

Macarthur Area – Weekend Works

Australian Rail Track Corporation (ARTC) will be doing construction works in your area as part of the SSFL works.

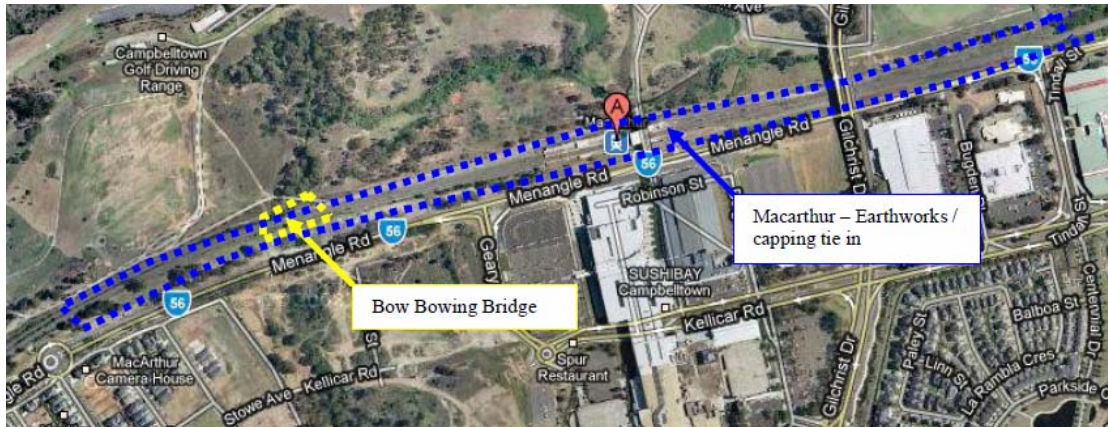
Macarthur to Menangle

The works include the testing of signals, points and track circuits. This will take place from 4am to 10pm on Saturday 21st August 2010 and from 6am to 11.59pm on Sunday 22nd August 2010. The equipment on site will include site vehicles and hand tools.



Macarthur Tie In

The works include earthworks, construction of drainage works, tie in to existing capping and installation of bridge girders. This will take place from 1am to 10pm on Saturday 21st August 2010 and from 8am to 10pm on Sunday 22nd August 2010. The equipment on site will include concrete trucks, concrete pumps, delivery vehicles, mobile cranes, lighting towers, bobcats, forklift trucks, tipper trucks, knuckle booms, working platforms, franna trucks, bogie trucks, excavators, rollers and graders.



Macarthur

The works include the installation of 5 signal posts and underline crossing. This will take place from 7am to 6pm on both Saturday 21st August 2010 and Sunday 22nd August 2010. The equipment on site will include site vehicles, excavators, dumper trucks, Manitou cranes and hand tools.



We appreciate everyone's patience while we build this important project.

Further information

For further information and any enquiries, please call the 24 Hour Information and Complaints Line **1800 182 543**



Or Email ssfl@artc.com.au or visit www.ssfl.artc.com.au

Translating & Interpreting Service – Please Phone: 131 450