

## Southern Sydney Freight Line IMPORTANT COMMUNITY INFORMATION

### Liverpool and Casula Area – Weekend Works

Australian Rail Track Corporation (ARTC) will be doing construction works in your area as part of the SSFL works. The works require the construction of a retaining wall which includes backfilling, earthworks and sheet piling. These works will take place on Saturday 21st August from 1pm to 10pm and on Sunday 22nd August from 8am to 10pm. Equipment on site will include concrete trucks, concrete pumps, delivery vehicles, mobile cranes, lighting towers, bobcats, forklift trucks, tipper trucks, knuckle booms, working platforms, franna trucks, bogie trucks, excavators, rollers and graders.

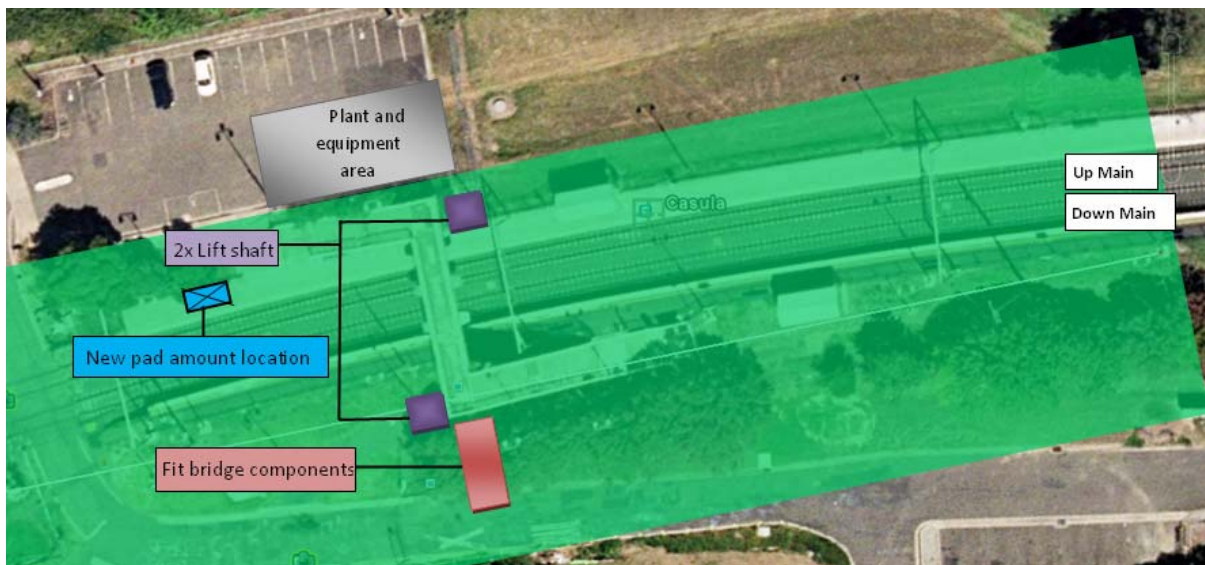


## Casula

Works will be undertaken in the Casula area between Shepherd St and Woodbrook Rd, and Shepherd St Bridge and Woodbrook Rd to Casula Level Crossing. The works will include sheet piling, piling and earthworks. These will take place on Saturday 21st August 2010 from 1pm to 10pm and Sunday 22nd August 2010 from 8am to 10pm. The equipment used will include concrete trucks, concrete pumps, delivery vehicles, mobile cranes, lighting towers, bobcats, forklift trucks, tipper trucks, knuckle booms, working platforms, franna trucks, bogie trucks, excavators, rollers and graders.

## Casula Station Works

Works at Casula Station include a power upgrade, works to lift shafts and footbridge, and extension of the deflecting wall. These works will take place from 2am Saturday 21st August to 2am Monday 23rd August 2010. The equipment used will include a 100t crane, 20t franna, scaffold, scissor lifts, hand tools, delivery trucks, oxy sets and generators. .



We appreciate everyone's patience while we build this important project.

## Further information

For further information and any enquiries, please call the 24 Hour Information and

**Complaints Line 1800 182 543**



Or Email [ssfl@artc.com.au](mailto:ssfl@artc.com.au) or visit [www.ssfl.artc.com.au](http://www.ssfl.artc.com.au)

Translating & Interpreting Service – Please Phone: 131 450