



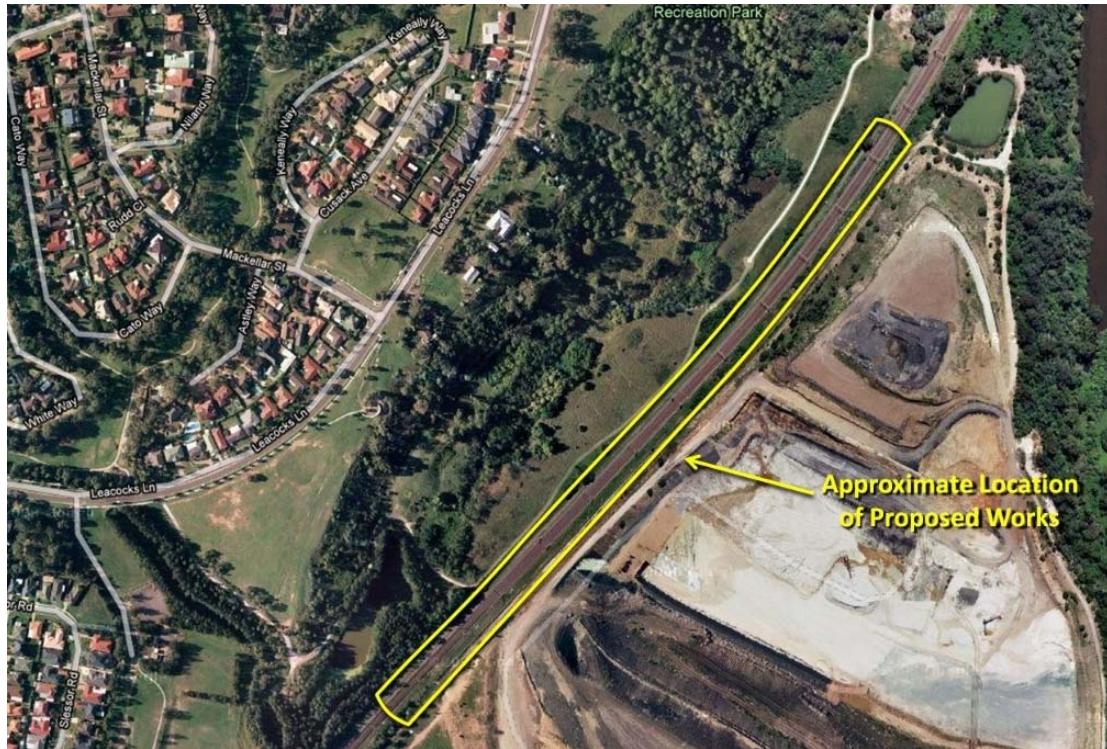
AUSTRALIAN RAIL TRACK CORPORATION LTD
Southern Sydney Freight Line
IMPORTANT COMMUNITY INFORMATION

Construction Work at Glenfield Flyover

Australian Rail Track Corporation (ARTC) will be doing construction works in your area as part of the SSFL works. The works include the installation of two power poles and the cutover of services.

Construction work will take place from 7.00am to 5.00pm on both Saturday 7th August and Sunday 8th August 2010.

The equipment on site will include a crane, pole truck, hand tools and road vehicles.



We appreciate everyone's patience while we build this important project for Sydney, NSW and the nation.

For **further information** and any enquiries, please call the **Complaints Line 1800 182 543**



Or Email ssfl@artc.com.au or visit www.ssfl.artc.com.au

Translating & Interpreting Service – **Please Phone:** 131 450