



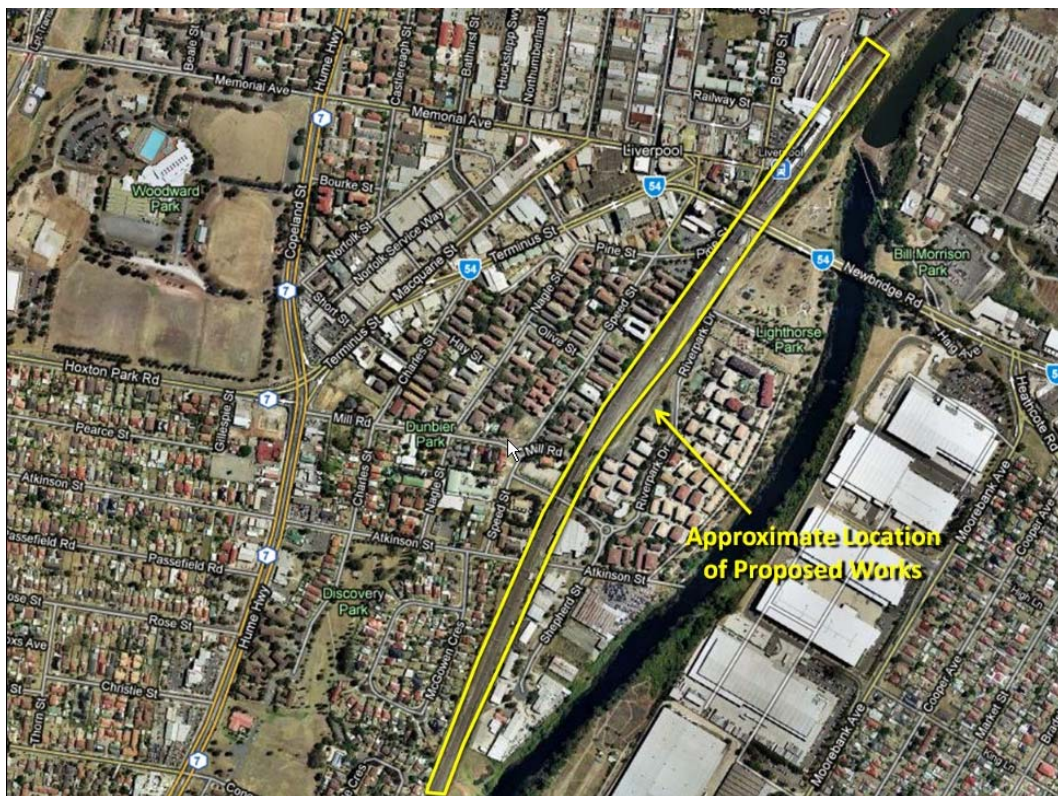
AUSTRALIAN RAIL TRACK CORPORATION LTD

Southern Sydney Freight Line IMPORTANT COMMUNITY INFORMATION

Liverpool Area – Weekend Works

Australian Rail Track Corporation (ARTC) will be undertaking construction works in your area over the weekend of the 19th and 20th June 2010. These works are part of the construction of the Southern Sydney Freight Line (SSFL).

Liverpool South - The works will take place from 7.00am and continue until 5.00pm on Saturday 19th June and Sunday 20th June 2010. The works will involve the construction of an underground cable route. The following equipment will be used excavator, dump truck, light vehicle and hand tools.



Shepherd Street Bridge, Liverpool – The works will take place from 7.00am until 6.00pm on both Saturday 19th June and Sunday 20th June. The works will involve the Liverpool Section Hut, including commissioning and integration into the RailCorp Infrastructure. The equipment that will be used will be hi-rail trucks and elevated work platforms.



We appreciate everyone's patience while we build this important project.

Further information

For further information and any enquiries, please call the 24 Hour Information and **Complaints Line 1800 182 543**



Or Email ssfl@artc.com.au or visit www.ssfl.artc.com.au

Translating & Interpreting Service – Please Phone: 131 450