



AUSTRALIAN RAIL TRACK CORPORATION LTD

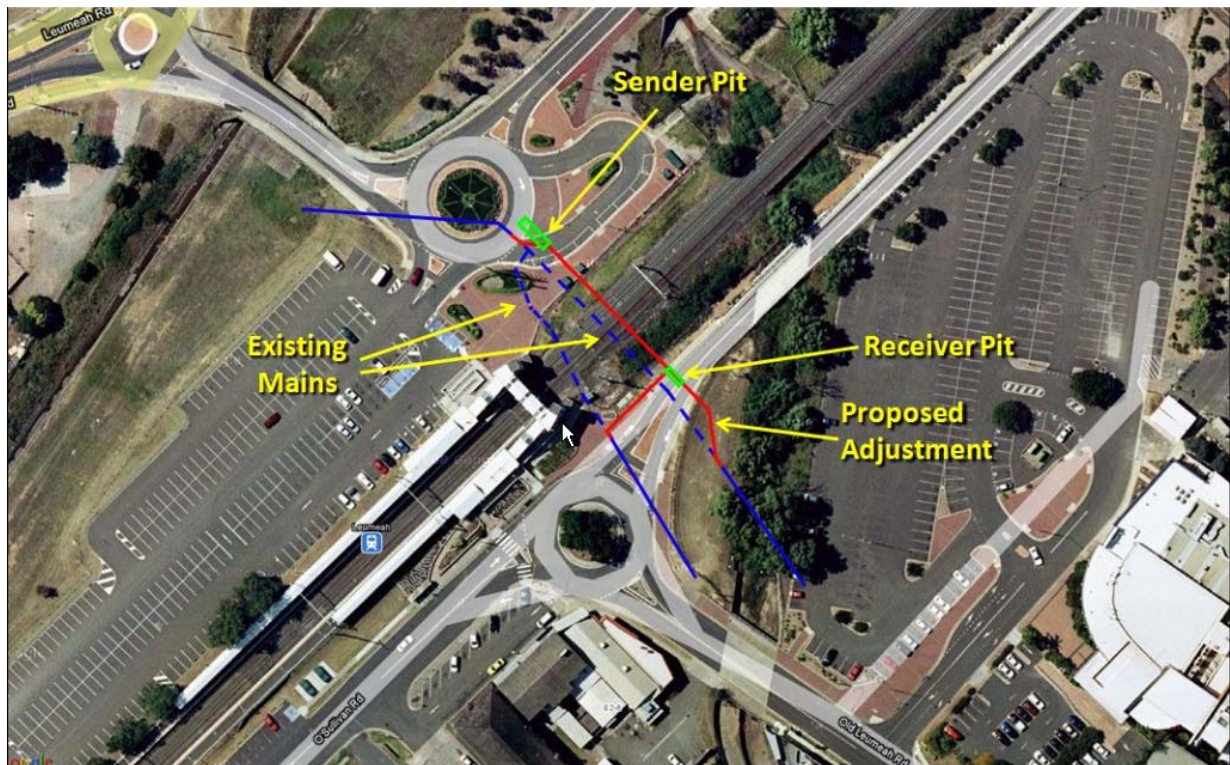
## Southern Sydney Freight Line IMPORTANT COMMUNITY INFORMATION

### Water Main Relocation, Leumeah Station

Australian Rail Track Corporation (ARTC) will be relocating a Sydney Water sewer main from Plough Inn Road to O'Sullivan Road underneath the railway line at Leumeah Station. This will replace the existing sewer mains that are in the way of the new Southern Sydney Freight Line. The work includes local excavation and trenching to connect to the existing water mains.

This work will begin on Monday 31<sup>st</sup> May 2010 and take approximately 8 weeks to complete. The work will be carried out in approved project hours. Pedestrian and traffic movements will be impacted for the duration of the works, traffic control will be in place to manage the flow of pedestrians and traffic around the worksite.

The equipment on site will be an excavator, welder, jack hammer, concrete mixer, work vehicles and hand tools.



We appreciate everyone's patience while we build this important project for Sydney, NSW and the nation.

#### Further information:

Phone 24 Hour Information and **Complaints** Line 1800 182 543

Email [ssfl@artc.com.au](mailto:ssfl@artc.com.au) or Visit [www.ssfl.artc.com.au](http://www.ssfl.artc.com.au)



Translating & Interpreting Service – **Please Phone:** 131 450