

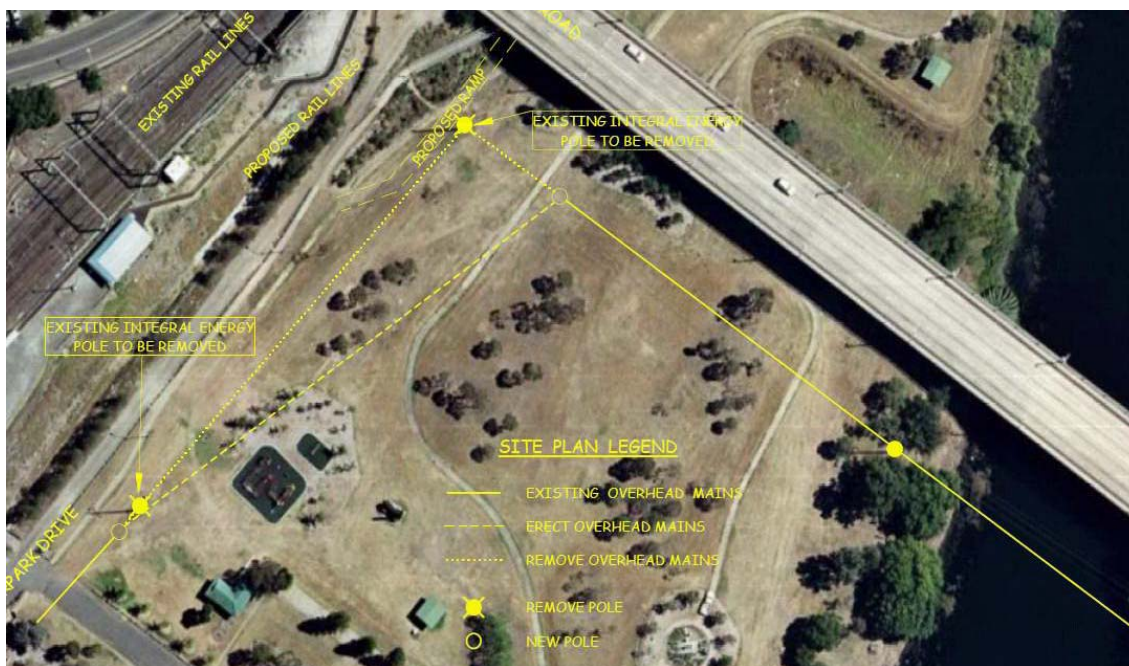


AUSTRALIAN RAIL TRACK CORPORATION LTD  
Southern Sydney Freight Line  
COMMUNITY INFORMATION

**Light Horse Park – Out of Hours Works**

Australian Rail Track Corporation (ARTC) will be undertaking work in Light Horse Park Liverpool for Southern Sydney Freight Line. The works will take place on the 18<sup>th</sup> April 2010 from 7.00am until 5.00pm. The work will involve the relocation of Integral Energy Transmission Line Power poles.

This relocation is required as part of the enabling works to facilitate the construction of the Southern Sydney Freight Line. The equipment on site will include pole auger truck, transmission poles, aerial conductors, tip truck and hand tools.



We appreciate everyone's patience while we build this important project for Sydney, NSW and the nation.

**Further information** please phone 24 Hour Information and **Complaints Line** 1800 182 543

Email [ssfl@artc.com.au](mailto:ssfl@artc.com.au) or Visit [www.ssfl.artc.com.au](http://www.ssfl.artc.com.au)



Translating & Interpreting Service – **Please Phone:** 131 450