



AUSTRALIAN RAIL TRACK CORPORATION LTD

Southern Sydney Freight Line IMPORTANT COMMUNITY INFORMATION

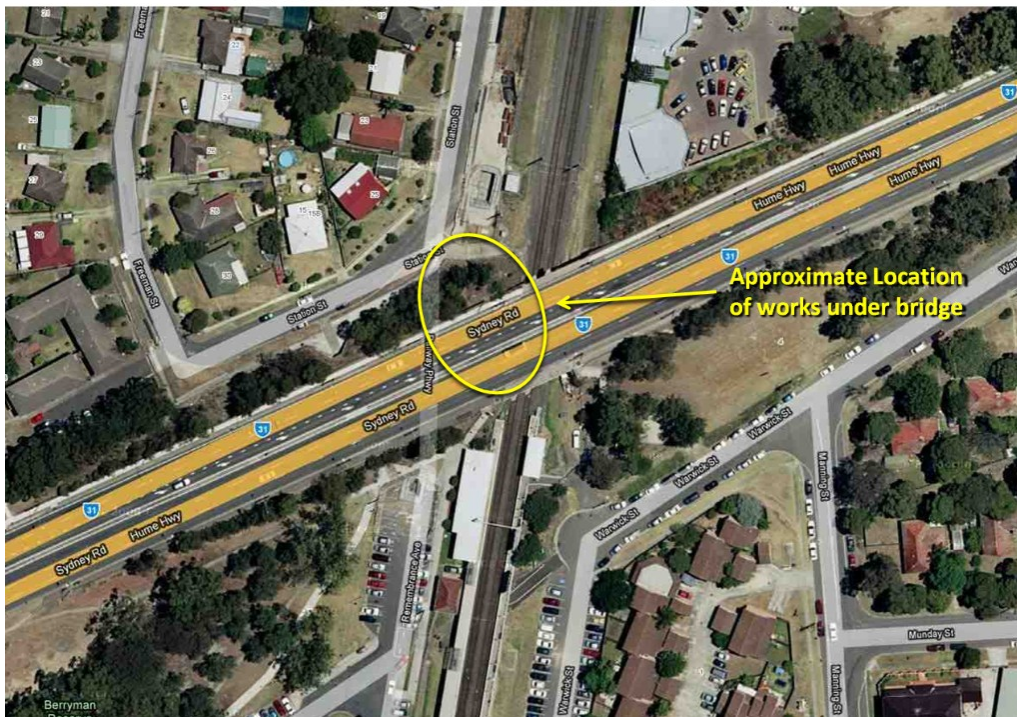
Warwick Farm – Out of Hours Work

Australian Rail Track Corporation (ARTC) will be installing a cable tray on the Hume Highway bridge wall and through the platform at Warwick Farm Station. This work will take place on the following dates and times:

- Wednesday 14th and Thursday 15th of April from 6.00pm to 7.00am;
- Saturday 1st and Sunday 2nd May from 7.00am to 6.00pm;
- Wednesday 5th and Thursday 6th May from 6.00pm to 7.00am;
- Saturday 8th and Sunday 9th May from 7.00am to 6.00pm; and
- Wednesday 12th and Thursday 13th May from 7.00am to 6.00pm as a contingency for completing the work.

The equipment on site will be three work utes, electrical hand drill, hand tools, shovels.

Proposed works under Warwick Farm Highway Bridge



This cable work is required as part of the enabling works to facilitate the construction of the Southern Sydney Freight Line.

We appreciate everyone's patience while we build this important project for Sydney, NSW and the nation.

Further information:

Phone 24 Hour Information and **Complaints** Line 1800 182 543

Email ssfl@artc.com.au or

Visit www.ssfl.artc.com.au



Translating & Interpreting Service – **Please Phone:** 131 450