



AUSTRALIAN RAIL TRACK CORPORATION LTD

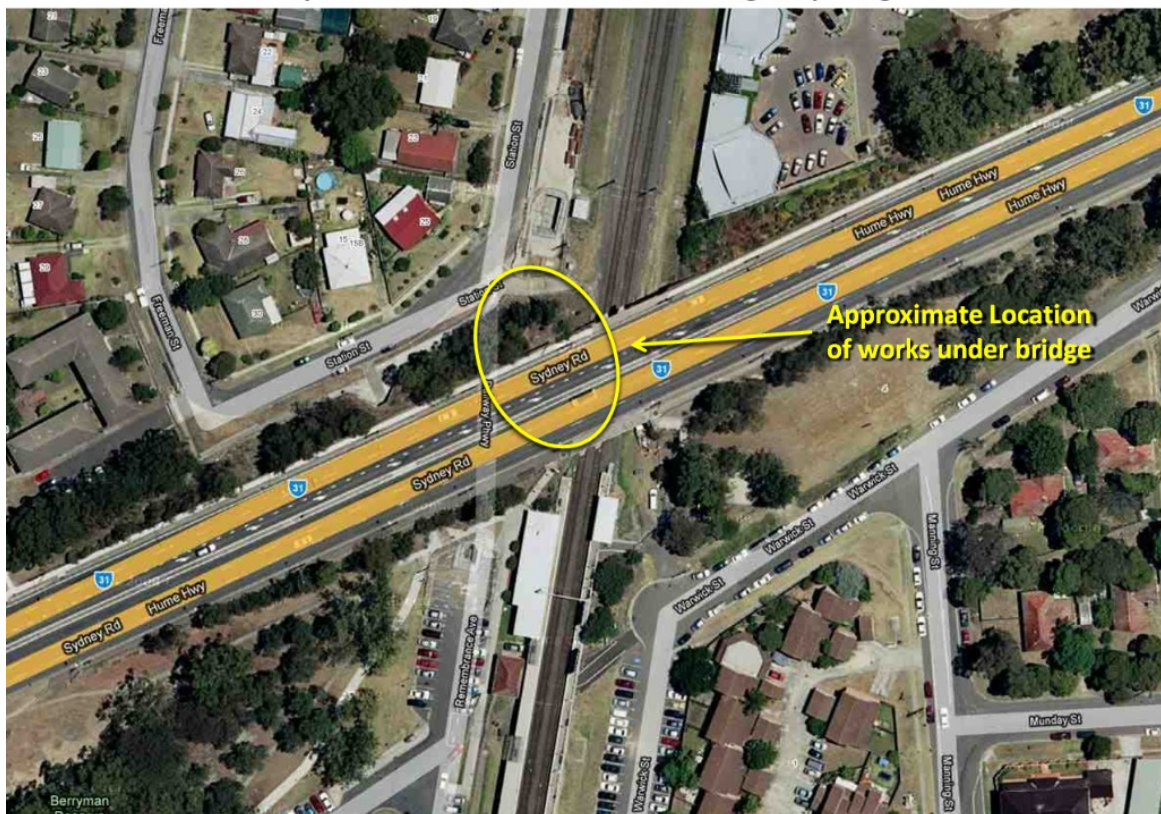
Southern Sydney Freight Line

IMPORTANT COMMUNITY INFORMATION

Warwick Farm – Out of Hours Work

Australian Rail Track Corporation (ARTC) will be installing cable tray on the bridge wall and through the platform. This work will take place on the 13th, 14th and 15th of April 2010 and start at 6.00pm and continue through the night until 7.00am on the three days. The equipment on site will be three work utes, electrical hand drill, hand tools, shovels.

Proposed works under Warwick Farm Highway Bridge



This cable work is required as part of the enabling works to facilitate the construction of the Southern Sydney Freight Line.

We appreciate everyone's patience while we build this important project for Sydney, NSW and the nation.

Further information:

Phone 24 Hour Information and **Complaints** Line 1800 182 543

Email ssfl@artc.com.au or

Visit www.ssfl.artc.com.au



Translating & Interpreting Service – **Please Phone:** 131 450