



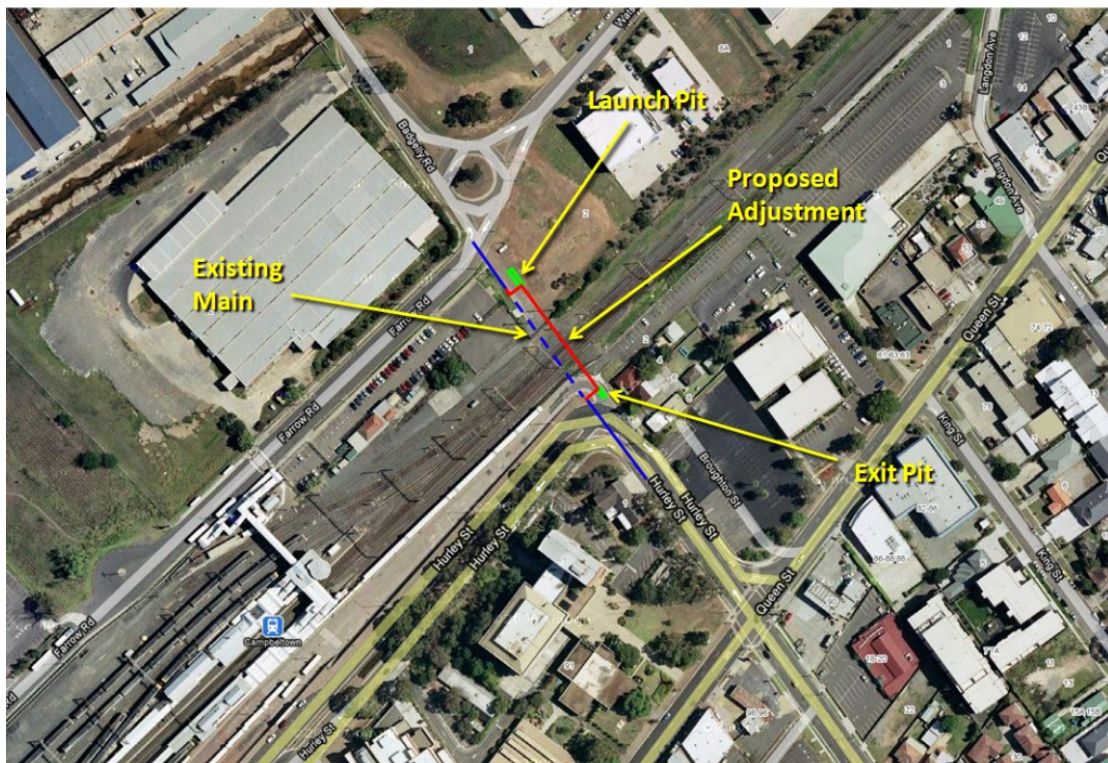
AUSTRALIAN RAIL TRACK CORPORATION LTD
Southern Sydney Freight Line
IMPORTANT COMMUNITY INFORMATION

Water Main Underbore at Broughton Street Campbelltown

Australian Rail Track Corporation (ARTC) will be installing a new Sydney Water water main from Broughton Street to Badgally Street Road underneath the railway line near Campbelltown Station as part of the SSFL works. This will replace the existing water main that is in the way of the new Southern Sydney Freight Line. The works includes an underbore beneath the railway line as well as local excavation and trenching to connect to the existing water main. These works will begin on the 22nd March 2010 and will continue for approximately 8 weeks. The work however will not occur continuously over the period of 8 weeks.

There will be traffic control in place to manage the traffic and the pedestrian movements around the worksite. The equipment on site will include an excavator, a boring machine, welder, jack hammer, concrete mixer, work vehicles, hand tools and traffic control.

W69 SWC Underbore Broughton St, Campbelltown - WS 057



For further information and any enquiries, please call the **Complaints Line 1800 182 543**



Or Email ssfl@artc.com.au or visit www.ssfl.artc.com.au

Translating & Interpreting Service – **Please Phone:** 131 450