



AUSTRALIAN RAIL TRACK CORPORATION LTD

## Southern Sydney Freight Line

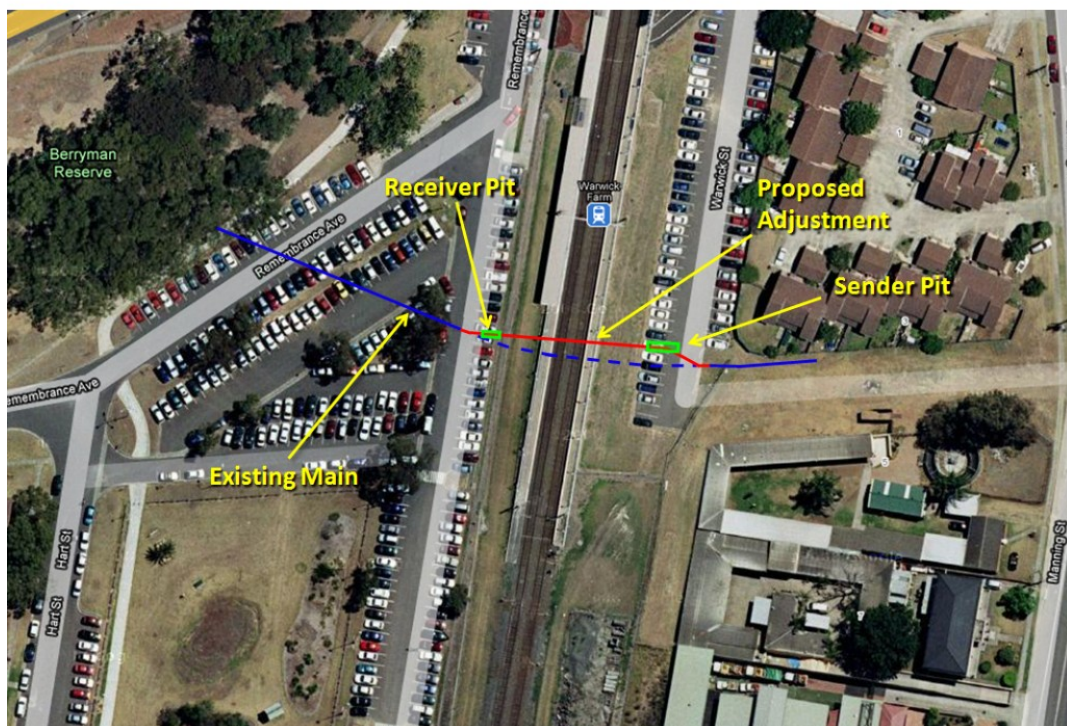
### IMPORTANT COMMUNITY INFORMATION

#### Sewer Main – Remembrance Ave, Warwick Farm

Australian Rail Track Corporation (ARTC) will be installing a new Sydney Water (SWC) sewer main from Warwick Street to Remembrance Ave near Warwick Farm Railway Station underneath the railway line. This will replace the existing sewer main that is in the way of the new Southern Sydney Freight Line. The works includes an under bore beneath the railway line as well as local excavation and trenching to connect to the existing water main. These works will begin on the 8<sup>th</sup> March 2010 and will continue for approximately 8 weeks.

There will be traffic control in place to manage the traffic and the pedestrian movements around the worksite.

W39 SWC underbore at Remembrance Ave, Warwick Farm Stn



This connection work is required as part of the enabling works to facilitate the construction of the Southern Sydney Freight Line.

We appreciate everyone's patience while we build this important project for Sydney, NSW and the nation.

**Further information:** Phone 24 Hour Information and **Complaints** Line 1800 182 543

Email [ssfl@artc.com.au](mailto:ssfl@artc.com.au) or Visit [www.ssfl.artc.com.au](http://www.ssfl.artc.com.au)



Translating & Interpreting Service – **Please Phone:** 131 450