



AUSTRALIAN RAIL TRACK CORPORATION LTD

Southern Sydney Freight Line

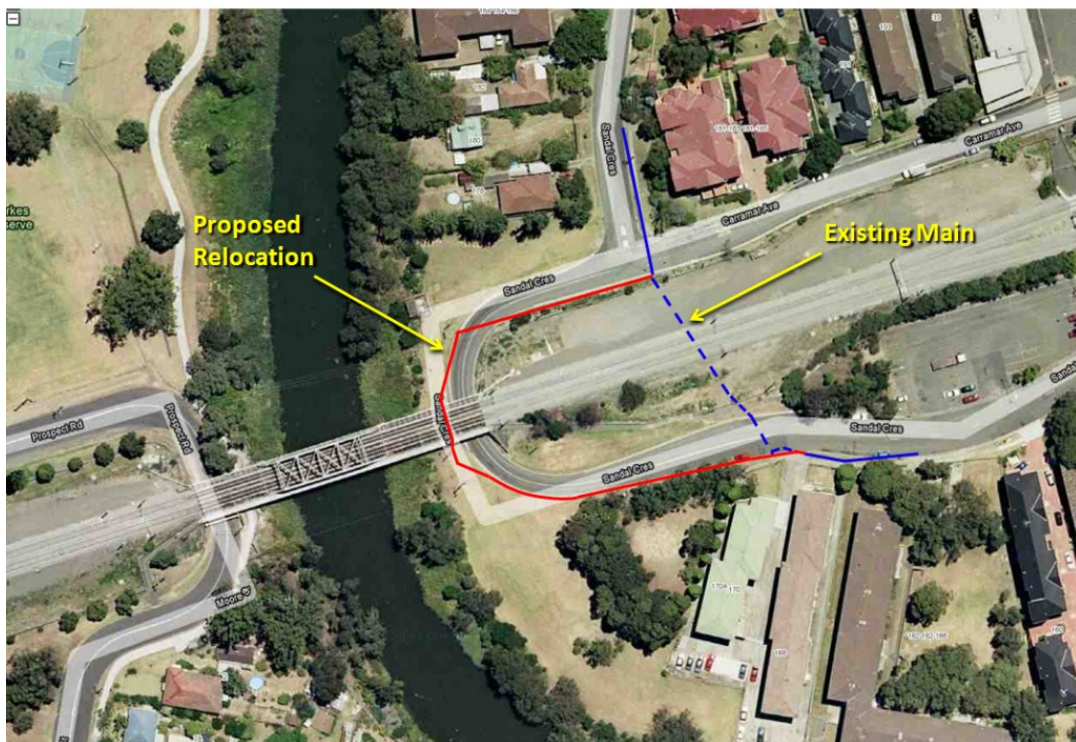
IMPORTANT COMMUNITY INFORMATION

Relocation Water Main, Sandal Cres, Carramar

Australian Rail Track Corporation (ARTC) will be installing a new Sydney Water (SWC) water main in Sandal Crescent, Carramar, near the Railway Station at Carramar. This will replace the existing water main that is in the way of the new Southern Sydney Freight Line. The works includes a connection along Sandal Crescent as well as local excavation and trenching to connect to the existing water main. These works will begin on the 8th March 2010 and will continue for approximately 8 weeks.

There will be traffic control in place to manage the traffic and the pedestrian movements around the worksite.

W23a SWC watermain relocation at Sandal Cr, Canley Vale



This connection work is required as part of the enabling works to facilitate the construction of the Southern Sydney Freight Line.

We appreciate everyone's patience while we build this important project for Sydney, NSW and the nation.

Further information: Phone 24 Hour Information and **Complaints** Line 1800 182 543

Email ssfl@artc.com.au or Visit www.ssfl.artc.com.au



Translating & Interpreting Service – **Please Phone:** 131 450