



AUSTRALIAN RAIL TRACK CORPORATION LTD

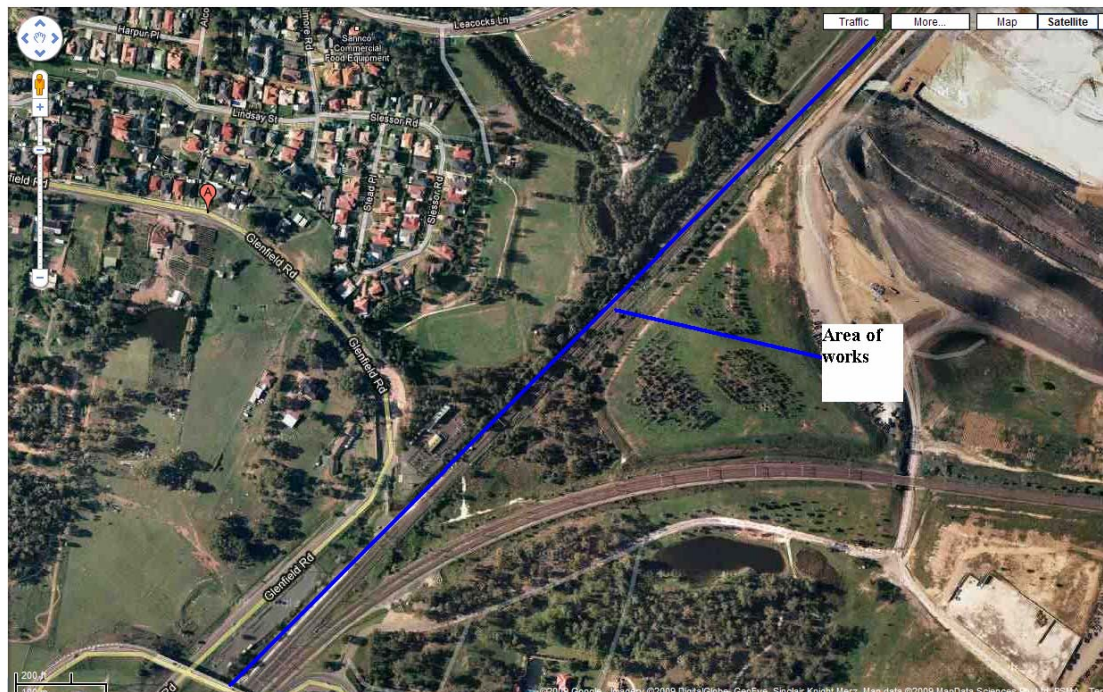
Southern Sydney Freight Line IMPORTANT COMMUNITY INFORMATION

Glenfield

Australian Rail Track Corporation (ARTC) will be undertaking construction works in your area over the weekend of the 27th and 28th February 2010. These works are part of the construction of the Southern Sydney Freight Line (SSFL).

The works will take place from 8.00am and continue until 10.00pm on Saturday 27th February and Sunday 28th Feb 2010. The works will involve construction of safety barrier, construction of retaining walls and earthworks and the following equipment will be used excavators, rollers, graders, tipper trucks, bobcats, forklift trucks, water truck, knuckle booms, working platforms, hand tools, and lighting towers.

Below are maps outlining the areas of work for your information.





We appreciate everyone's patience while we build this important project.

Further information

For further information and any enquiries, please call the 24 Hour Information and
Complaints Line 1800 182 543



Or Email ssfl@artc.com.au or visit www.ssfl.artc.com.au

Translating & Interpreting Service – Please Phone: 131 450