



AUSTRALIAN RAIL TRACK CORPORATION LTD

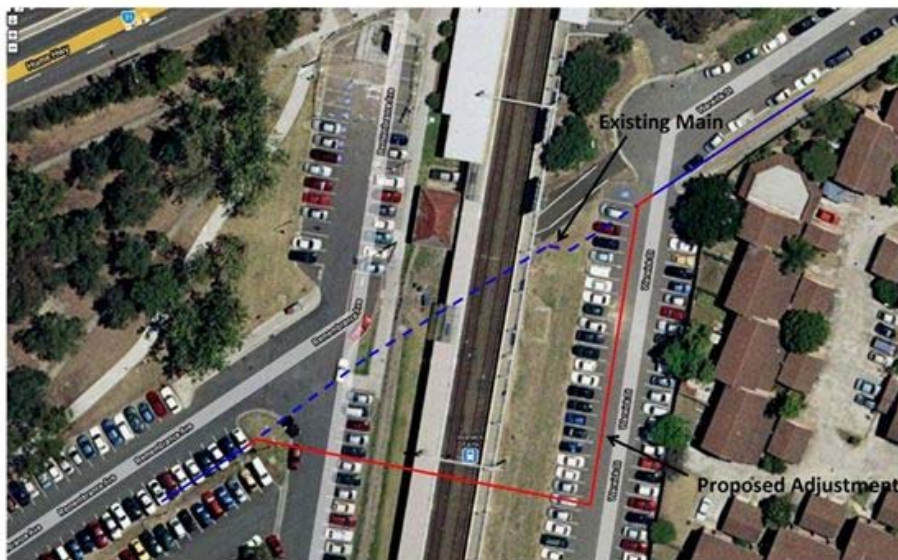
**Southern Sydney Freight Line
IMPORTANT COMMUNITY INFORMATION
Warwick Farm Station**

Australian Rail Track Corporation (ARTC) are currently completing the construction of an underbore at Warwick Farm Station as part of the SSFL works. The work will require connecting into the Sydney Water system, which may cause some disruption to your water supply. Prior to this connection Sydney Water will contact residential customers 3 days in advance of the disruption and for Commercial Customers 7 days before the disruption. These connection works will be take place towards the end of February/early March 2010.

There will be traffic control in place to manage the traffic and the pedestrian movements around the worksite.

This connection work is required as part of the enabling works to facilitate the construction of the Southern Sydney Freight Line. The equipment on site will include an excavator, a welder, work vehicles, generator and traffic control.

W38 SWC underbore at Warwick St, Warwick Farm Stn WS 021



For **further information** and any enquiries, please call the **Complaints Line 1800 182 543**



Or Email ssfl@artc.com.au or visit www.ssfl.artc.com.au

Translating & Interpreting Service – Please Phone: 131 450