



AUSTRALIAN RAIL TRACK CORPORATION LTD

**Southern Sydney Freight Line
IMPORTANT COMMUNITY INFORMATION**

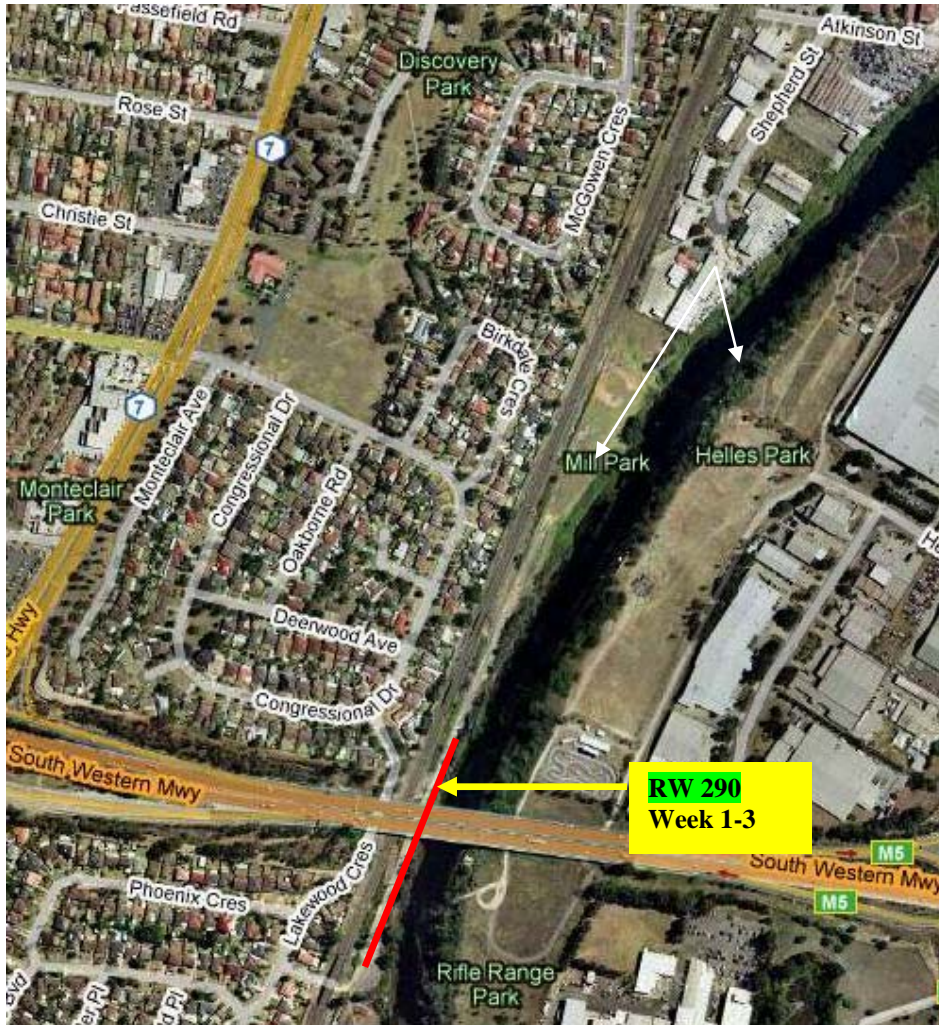
Retaining Walls – Out of Hours Work

Australian Rail Track Corporation (ARTC) will be undertaking construction works in your area.

ARTC is constructing a new retaining wall on piles in the Casula area. These works are part of the construction of the Southern Sydney Freight Line (SSFL). During the period 29th October 2009 until 5th November 2009 construction hours may extend from 6.00pm until 10.00pm week days if required to get these critical works done. These extended working hours will be a contingency in case inclement weather and/or plant failure on site delays the work.

ARTC's contractors will also work out of hours on Saturday 31st October during between 1.00pm to 5.00pm to complete the piling works for the new retaining wall.

The work will involve piling works and earthworks and the equipment used will be excavators, cranes, piling rig, tipper truck and hand tools.



We appreciate everyone's patience while we build this important project.

Further information

For further information and any enquiries, please call the 24 Hour Information and

Complaints Line 1800 182 543



Or Email ssfl@artc.com.au or visit www.ssfl.artc.com.au

Translating & Interpreting Service – Please Phone: 131 450

Parents/guardians of children undertaking final examinations and who may be affected by the evening or Saturday work are invited to contact ARTC concerning special arrangements.