



AUSTRALIAN RAIL TRACK CORPORATION LTD

Southern Sydney Freight Line IMPORTANT COMMUNITY INFORMATION

Minto

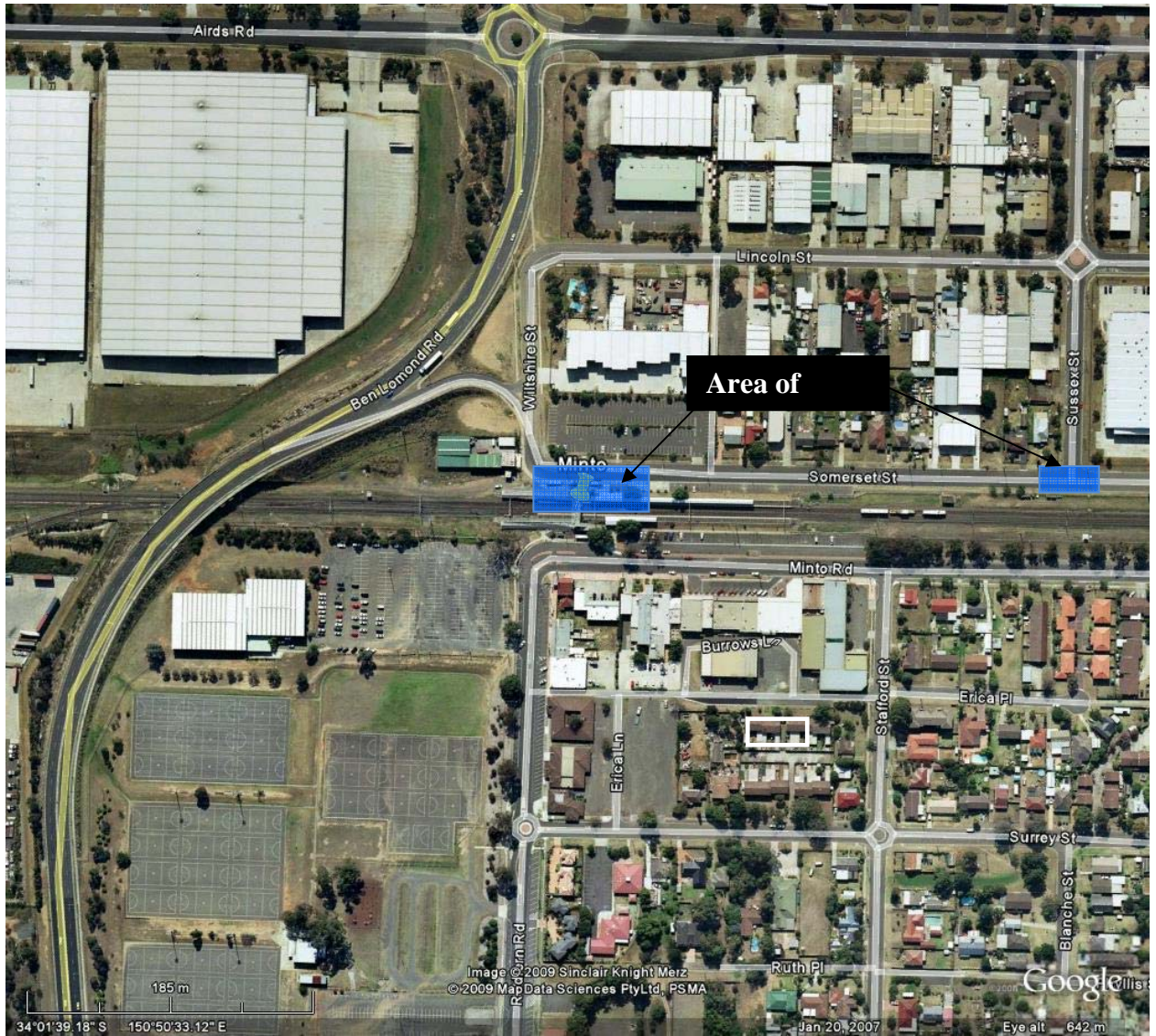
Australian Rail Track Corporation (ARTC) will be undertaking construction works in your area over the weekend of the 20th and 21st February 2010. These works are part of the construction of the Southern Sydney Freight Line (SSFL).

Sussex Street, Minto – the works will begin at 7.00am and continue until 7.00pm on both Saturday and Sunday. The works will involve excavation work, including some concreting around the existing gas service and a final slab pour. The equipment used will be back hoe, dig, concrete trucks, welding and gas axe.

Minto Station Works – the works will begin at 2.00am on Saturday 20th Feb and will continue until 2am Monday 22nd Feb. The works will involve the erection of structural steel shafts, the erection of precast landing slab, erection of lift and landing roof.

Minto/Leaumeah: The works will begin at 7.00am and finish at 6.00pm on both Saturday and Sunday. The work will involve the relocation of a signal, works will include potholing of existing buried cable routes, excavation of cable route trenches, relocation of existing RailCorp signalling location cases, installation of buried and above ground cable routes, installation and relocation of cables.

Attached is an image of the works for your information.



We appreciate everyone's patience while we build this important project.

Further information

For further information and any enquiries, please call the 24 Hour Information and

Complaints Line 1800 182 543



Or Email ssfl@artc.com.au or visit www.ssfl.artc.com.au

Translating & Interpreting Service – Please Phone: 131 450