



AUSTRALIAN RAIL TRACK CORPORATION LTD

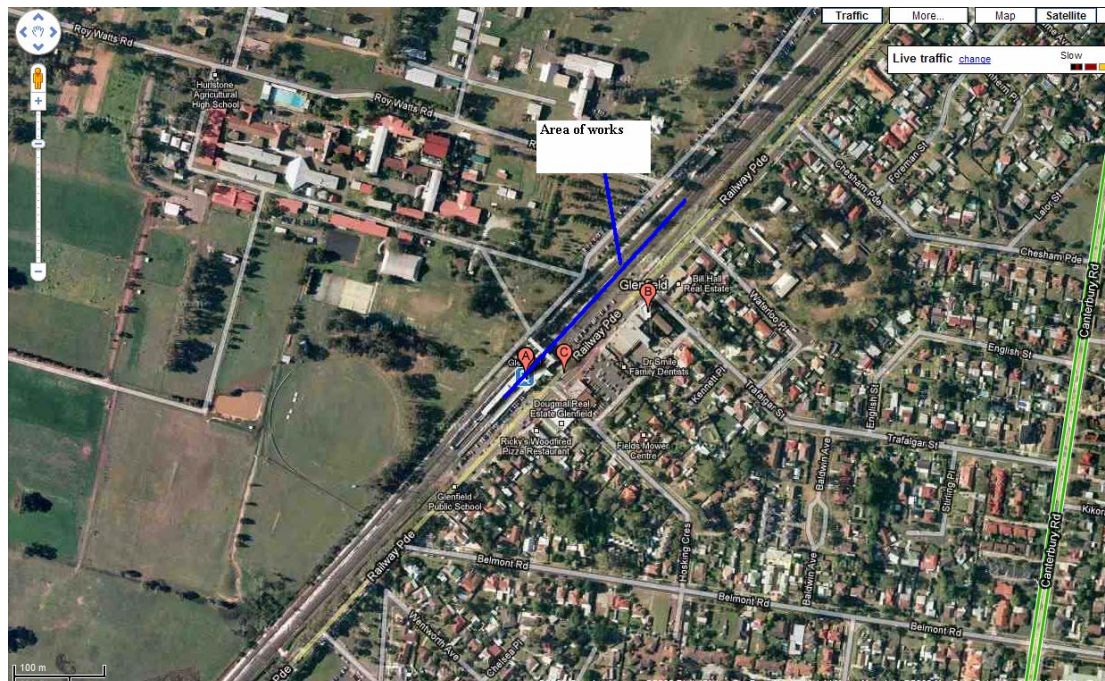
Southern Sydney Freight Line IMPORTANT COMMUNITY INFORMATION

Glenfield

Australian Rail Track Corporation (ARTC) will be undertaking construction works in your area over the weekend of the 20th and 21st February 2010. These works are part of the construction of the Southern Sydney Freight Line (SSFL).

Glenfield Tie In - The works will take place from 8.00am on Saturday 20th Feb and will continue until 10.00pm on Sunday 21st February 2010. The works will involve the construction of a safety barrier, retaining walls and also some earthworks. The equipment which will be used will be excavators, rollers, graders, tipper trucks, concrete trucks, concrete pump, bobcats, forklift trucks, hand tools, water trucks and lighting towers.

Area of works is outlined in aerial below.



Glenfield Open Trench, undertrack crossing – The works will take place from 7.00am until 7.00pm on both Saturday and Sunday. The works will involve the construction of an open trench under crossing. The equipment used will be an excavator, dumpy and hand tools.

We appreciate everyone's patience while we build this important project.

Further information

For further information and any enquiries, please call the 24 Hour Information and

Complaints Line 1800 182 543



Or Email ssfl@artc.com.au or visit www.ssfl.artc.com.au

Translating & Interpreting Service – Please Phone: 131 450