



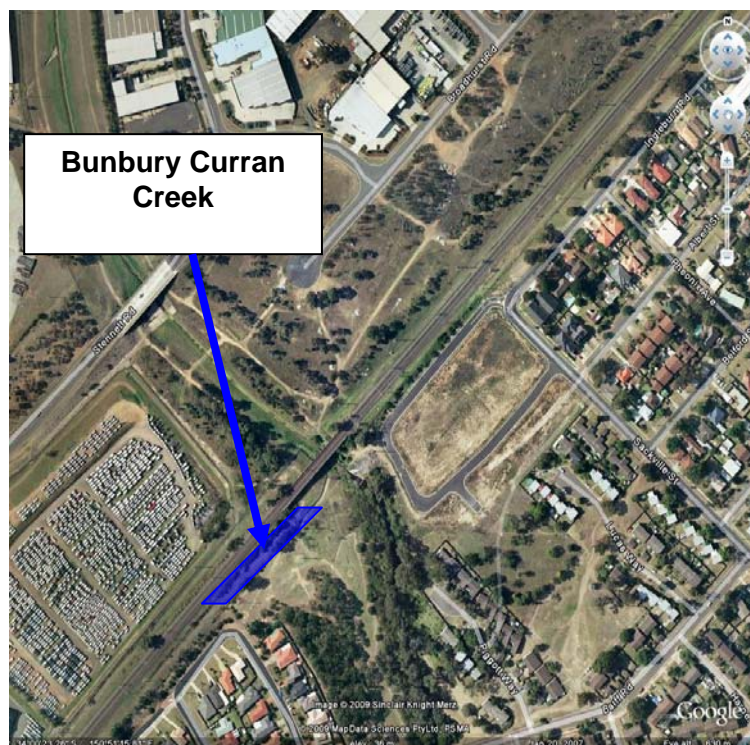
AUSTRALIAN RAIL TRACK CORPORATION LTD

Southern Sydney Freight Line IMPORTANT COMMUNITY INFORMATION

Ingleburn Bunbury Curran Creek

Australian Rail Track Corporation (ARTC) will be undertaking construction works in your area over the weekend of 24th and 25th October 2009.

These works are part of the construction of the Southern Sydney Freight Line (SSFL). The works will begin at 7.00am until 5.00pm on both Saturday and Sunday. The works will involve sheet piling for wing walls and concrete pouring. The equipment utilised will be a sheet piler, 12t excavator, bogie trucks, trenching machine and concrete trucks.



We appreciate everyone's patience while we build this important project.

Further information

For further information and any enquiries, please call the 24 Hour Information and

Complaints Line 1800 182 543



Or Email ssfl@artc.com.au or visit www.ssfl.artc.com.au

Translating & Interpreting Service – Please Phone: 131 450