



AUSTRALIAN RAIL TRACK CORPORATION LTD

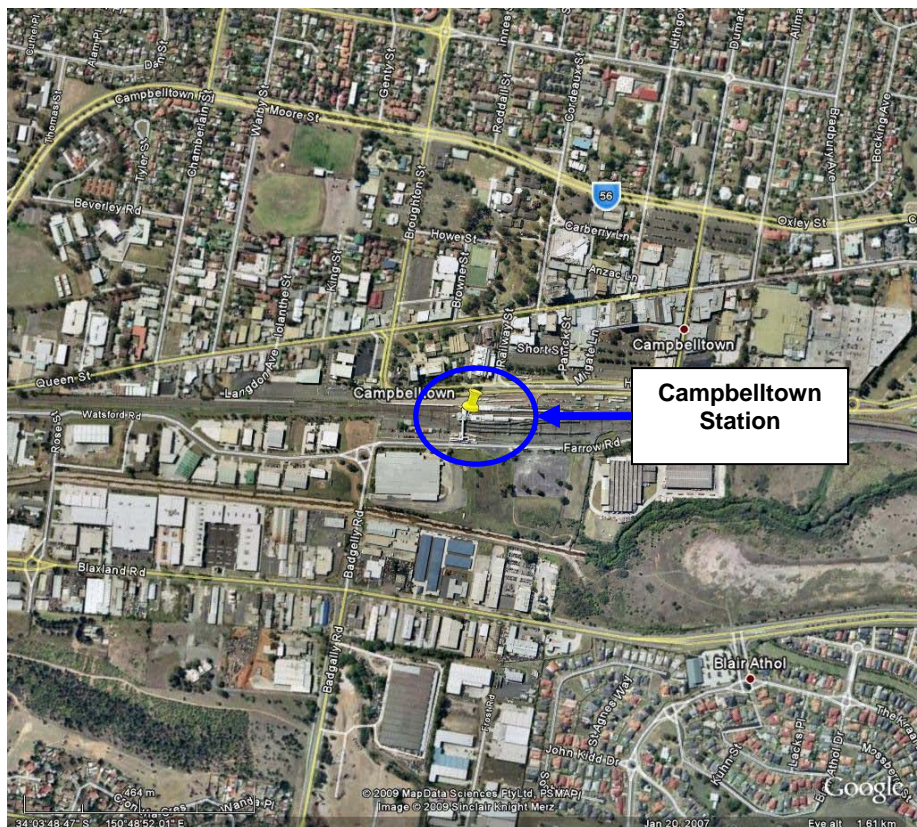
## Southern Sydney Freight Line IMPORTANT COMMUNITY INFORMATION

### Campbelltown Works

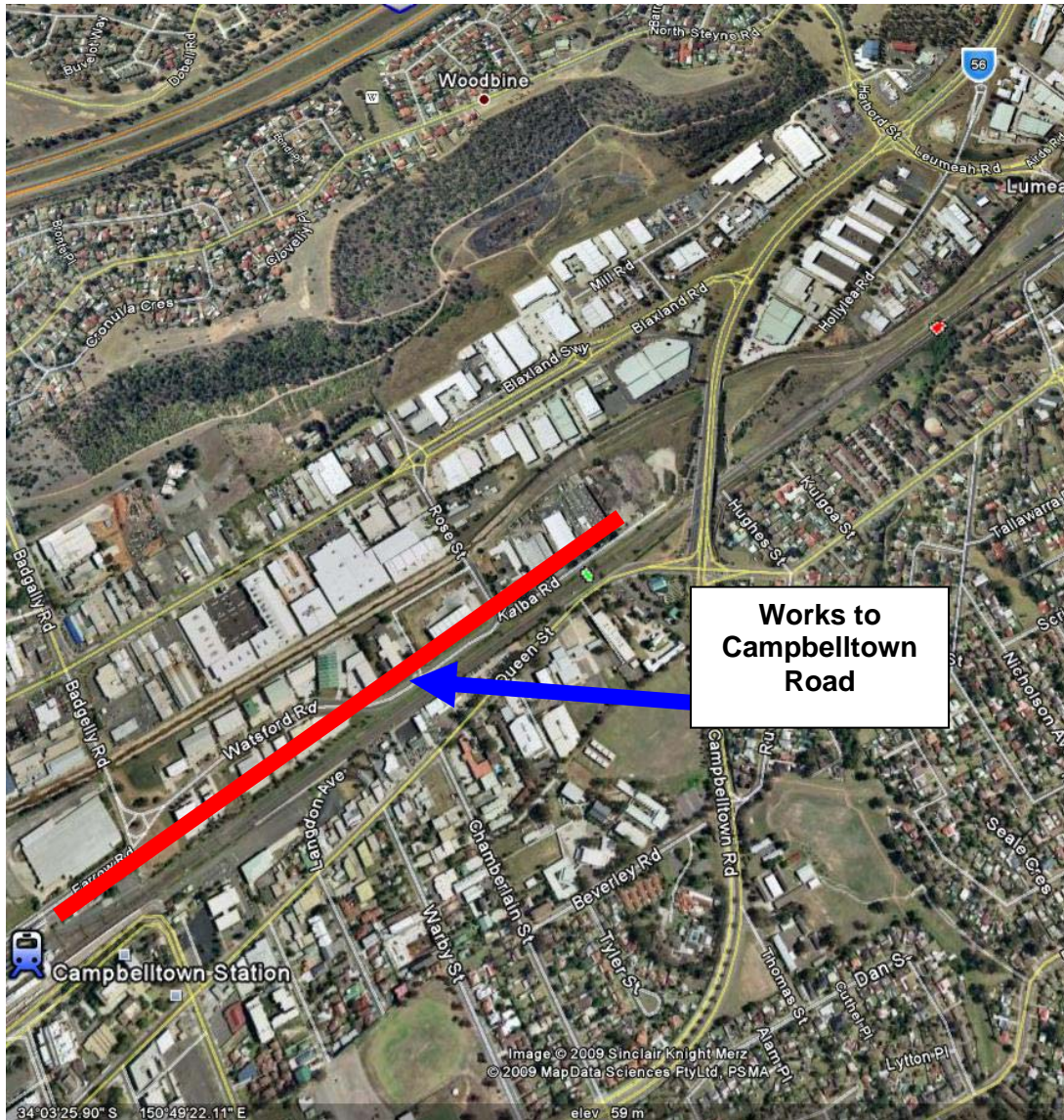
Australian Rail Track Corporation (ARTC) will be undertaking construction works in your area over the weekend of 19<sup>th</sup> to the 21<sup>st</sup> September 2009.

These works are part of the construction of the Southern Sydney Freight Line (SSFL). In this area, there will be work across two sites as below:

**Campbelltown Station** – works will begin at 2.00am on Saturday and will continue until 2.00am on Monday. The works will involve piling on platform and screw piles in the stabling yard. The equipment used will be 2 x piling rigs, rubber tyre tippers and concrete pump and city crane.



**Campbelltown Station – Campbelltown Road** – works will take place from 7.00 am until 5.00pm on both Saturday and Sunday. The works will involve earthworks and culvert installation and subsoil drainage. Demolition of existing structure. The equipment utilised at this site will be excavator, roller, compactor, water cart, bogie trucks, trenching machine and grader.



We appreciate everyone's patience while we build this important project.

### Further information

For further information and any enquiries, please call the 24 Hour Information and Complaints Line **1800 182 543**



Or Email [ssfl@artc.com.au](mailto:ssfl@artc.com.au) or visit [www.ssfl.artc.com.au](http://www.ssfl.artc.com.au)

Translating & Interpreting Service – Please Phone: 131 450