



AUSTRALIAN RAIL TRACK CORPORATION LTD

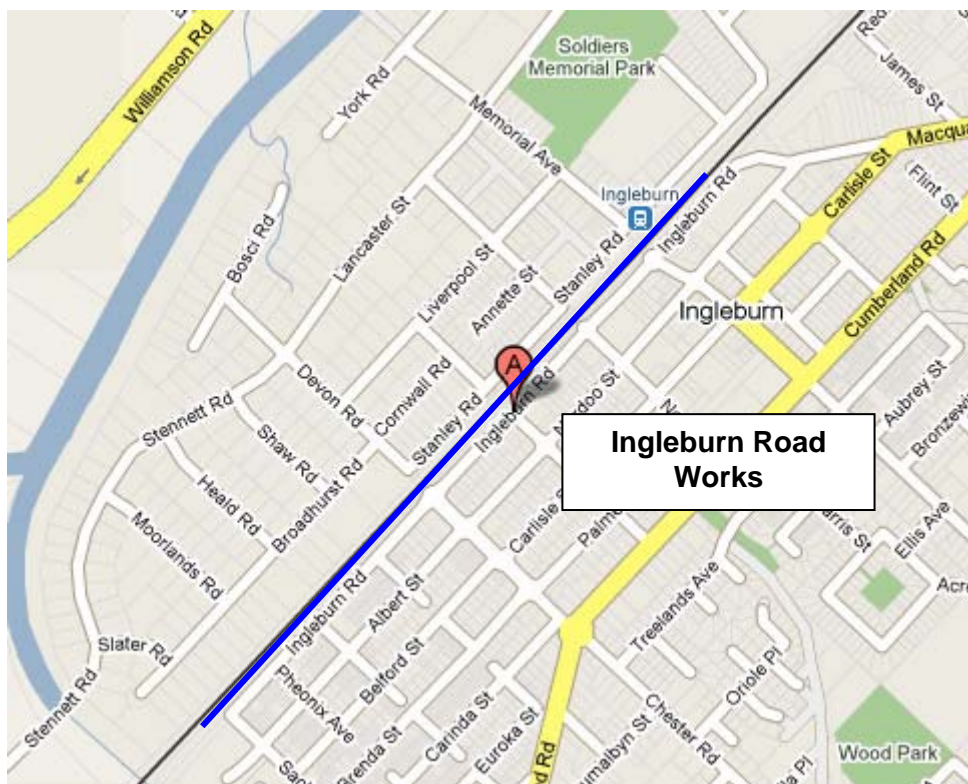
Southern Sydney Freight Line IMPORTANT COMMUNITY INFORMATION

Ingleburn Works

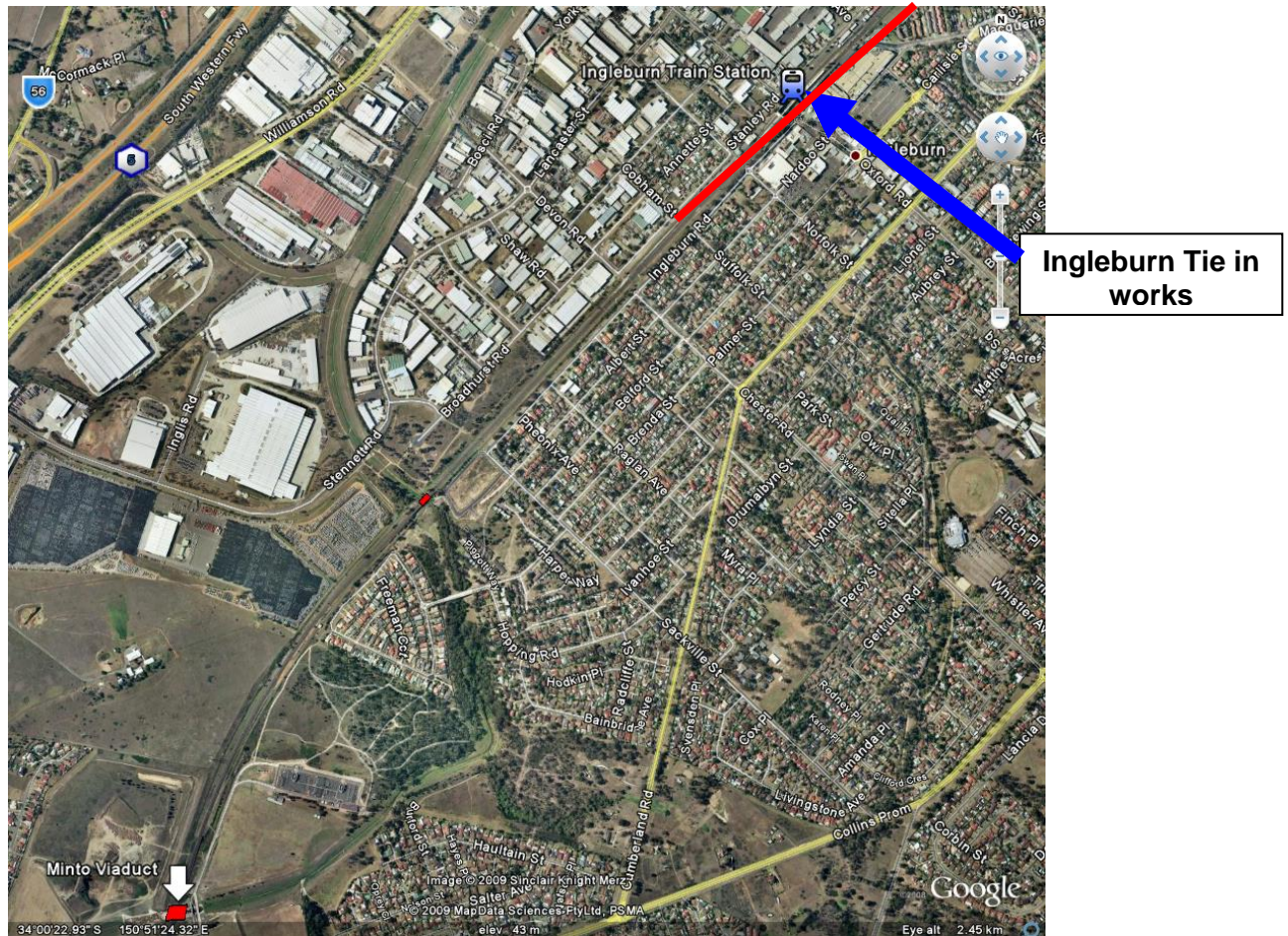
Australian Rail Track Corporation (ARTC) will be undertaking construction works in your area over the weekend of 19th to the 21st September 2009.

These works are part of the construction of the Southern Sydney Freight Line (SSFL). In this area, there will be work across two sites as below:

Ingleburn Road, Ingleburn – the works will take place from 6.00am until 6.00pm on both Saturday and Sunday. The works will involve the installation of new poles and the transfer of existing wires to new poles, and the removal of any redundant poles. The equipment used will be elevated work platforms x 2, light vehicles and hand tools.



Ingleburn Tie In – the works will take place on Saturday 19th from 8.00am until 6.00pm and on Sunday from 8.00am until 5.00pm. The works will involve earthworks, culvert installation and formation and subsoil drainage works. The equipment used will be excavator, roller, compactor, water cart, bogie truck, trenching machine and grader.



We appreciate everyone's patience while we build this important project.

Further information

For further information and any enquiries, please call the 24 Hour Information and

Complaints Line 1800 182 543



Or Email ssfl@artc.com.au or visit www.ssfl.artc.com.au

Translating & Interpreting Service – Please Phone: 131 450