



AUSTRALIAN RAIL TRACK CORPORATION LTD

Southern Sydney Freight Line IMPORTANT COMMUNITY INFORMATION

Glenfield Creek and Glenfield Flyover

Australian Rail Track Corporation (ARTC) will be undertaking construction works in Sefton over the weekend of 12th and 13th September 2009. These works are part of the construction of the Southern Sydney Freight Line (SSFL)

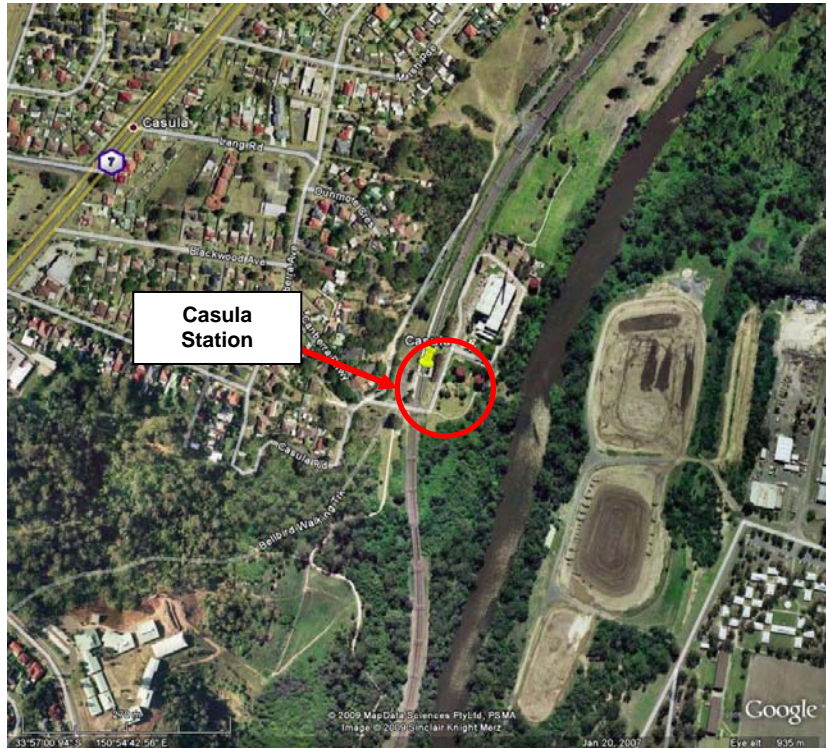
ARTC will be working at four locations in your area, as below:

Site One: Glenfield Creek Area – The work will begin at 6am on Saturday and continue until 10pm Sunday. The work will involve the installation of piers, super –t's, and girders at Glenfield Creek. The equipment used will be cranes, concrete pumps, trucks and hand tools.

Site Two: Glenfield Flyover – The works will begin at 8am on Saturday and will continue until 8am on Monday. The work will involve headstock installation on the Flyover Bridge. The equipment being used will be 250t crane, 300t crane, cherry and picker and hand tools.

Site Three: Glenfield Substation – The works will begin at 7am on Saturday and finish at 7pm on Saturday. The works will involve Overhead Wiring re-profiling. The equipment used will be hi rail cherry pickers and manitous.

Site Four: Casula Station – The works will begin at 5am on Saturday to 9pm on Sunday. The works will involve installation of structural steel shaft and headstock. The equipment used will be crane, scaffold, and scissor lifts.



We appreciate everyone's patience while we build this important project.

Further information

For further information and any enquiries, please call the 24 Hour Information and Complaints Line **1800 182 543**



Or Email ssfl@artc.com.au or visit www.ssfl.artc.com.au

Translating & Interpreting Service – Please Phone: 131 450