



AUSTRALIAN RAIL TRACK CORPORATION LTD

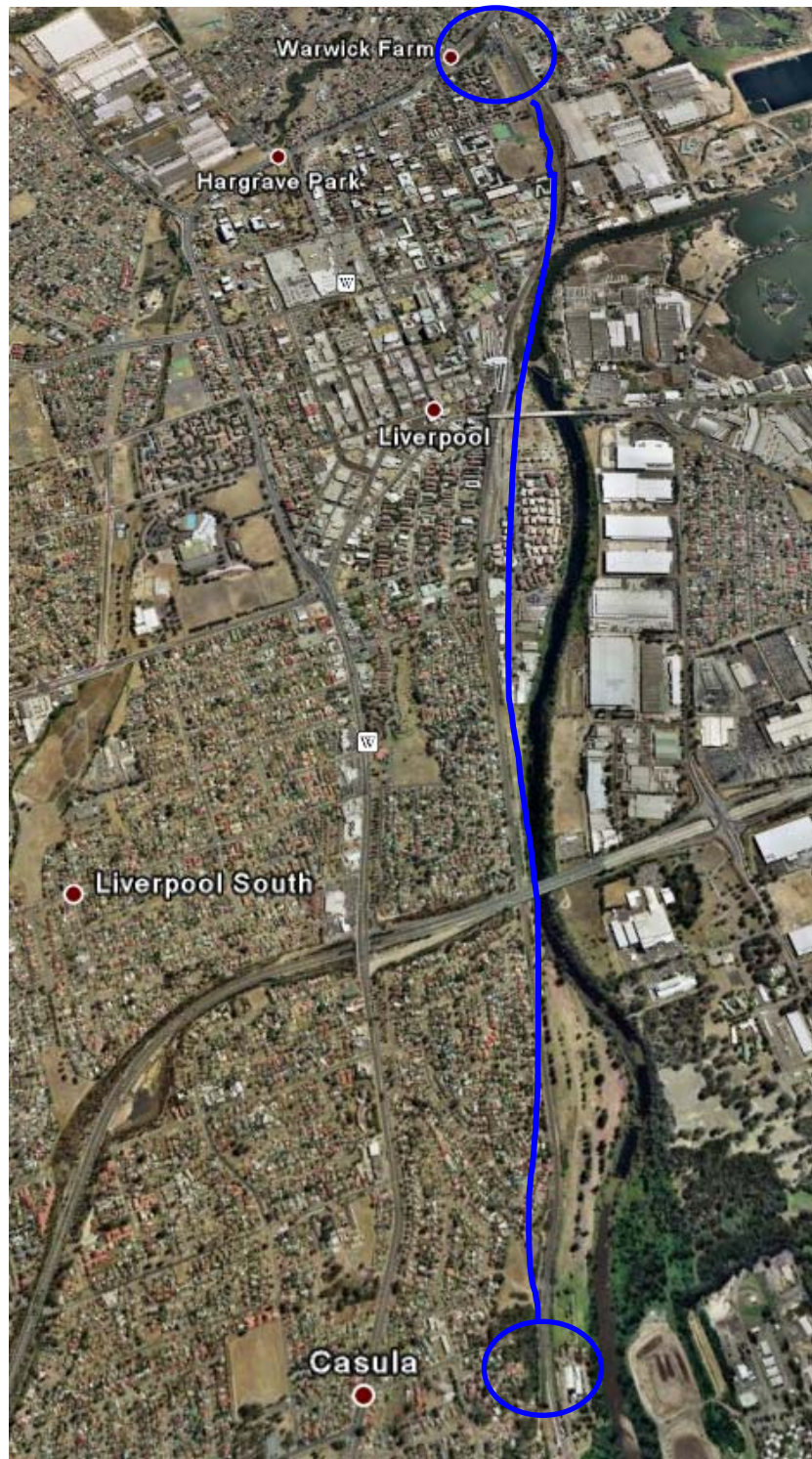
## Southern Sydney Freight Line IMPORTANT COMMUNITY INFORMATION

### **Earthworks – Warwick Farm to Casula**

Australian Rail Track Corporation (ARTC) will be undertaking construction works in your area over the weekend of 12<sup>th</sup> and 13<sup>th</sup> September 2009.

These works are part of the construction of the Southern Sydney Freight Line (SSFL).

The works will be from 7.00am until 5.00pm on both Saturday and Sunday. The works will involve earthworks, piling works, anchoring works and works on the retaining walls. The equipment used will be excavator, mobile cranes, trucks, concrete trucks, concrete pumps, roller, piling/sheet piling rigs and hand tools.



We appreciate everyone's patience while we build this important project.

#### **Further information**

For further information and any enquiries, please call the 24 Hour Information and  
**Complaints Line 1800 182 543**



Or Email [ssfl@artc.com.au](mailto:ssfl@artc.com.au) or visit [www.ssfl.artc.com.au](http://www.ssfl.artc.com.au)

Translating & Interpreting Service – Please Phone: 131 450