



AUSTRALIAN RAIL TRACK CORPORATION LTD

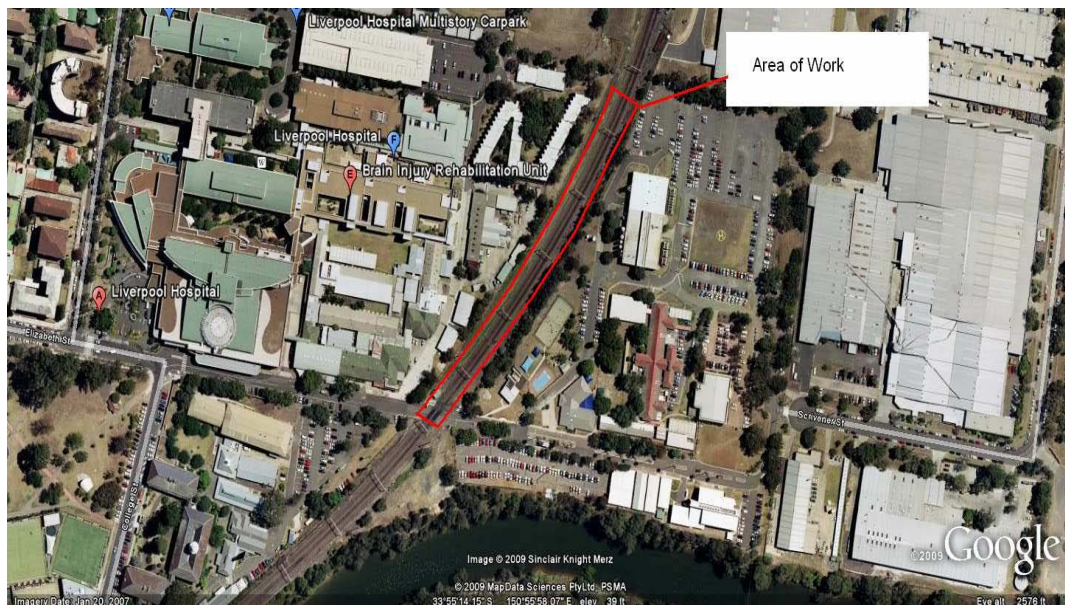
## Southern Sydney Freight Line IMPORTANT COMMUNITY INFORMATION

### Liverpool Deck Bridges

Australian Rail Track Corporation (ARTC) will be undertaking construction works in your area over the weekend of 12<sup>th</sup> and 13<sup>th</sup> September 2009. These works are part of the construction of the Southern Sydney Freight Line (SSFL).

**Liverpool Hospital Bridge** – works will begin at 6am until 6pm on Saturday 12<sup>th</sup> September, the work will involve the installation of mesh panels and carryout painting remediation works on pedestrian bridge, as well as some modification works on the roadbridge. The equipment used will be 2 x cherry picker, hand held painting tools, hand held grinder and candy welder.

**Liverpool Deck Bridge** – The works will begin at 6am until 10pm on both Saturday 12<sup>th</sup> and Sunday 13<sup>th</sup>. The works will involve reo-steel fixing and formwork installation, concreting, Ground anchor installation and stressing and steelwork installation for permanent walkway. The equipment utilised will be anchor stressing rig, 20ton franna crane, 2 x tip trucks, concrete truck and pumping arrangement and 2 x flood lights.



We appreciate everyone's patience while we build this important project.

#### Further information

For further information and any enquiries, please call the 24 Hour Information and

**Complaints Line 1800 182 543**



Or Email [ssfl@artc.com.au](mailto:ssfl@artc.com.au) or visit [www.ssfl.artc.com.au](http://www.ssfl.artc.com.au)

Translating & Interpreting Service – Please Phone: 131 450