



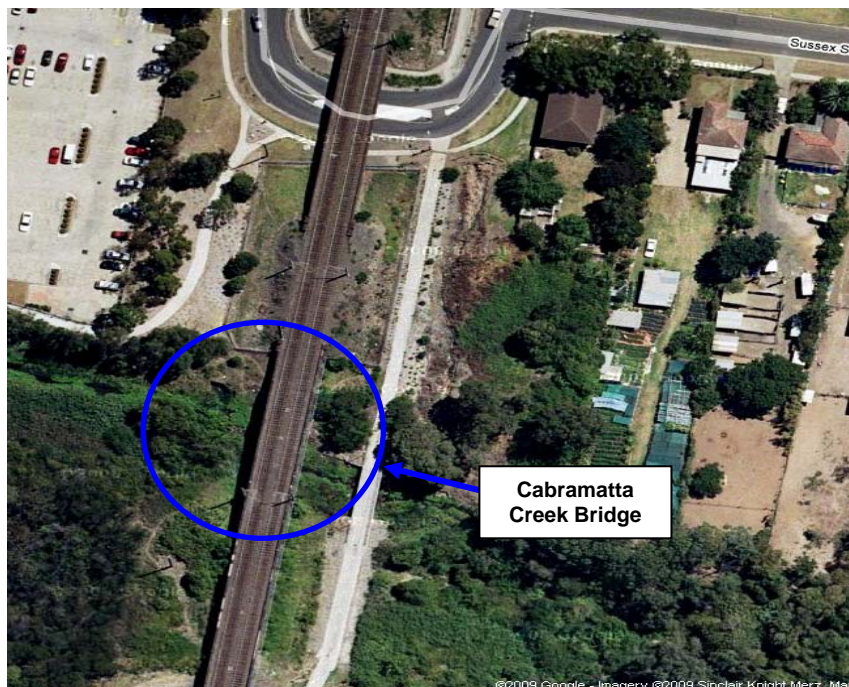
AUSTRALIAN RAIL TRACK CORPORATION LTD

Southern Sydney Freight Line IMPORTANT COMMUNITY INFORMATION

Cabramatta Creek Bridge

Australian Rail Track Corporation (ARTC) will be undertaking construction works in your area over the weekend of 12th and 13th September 2009. These works are part of the construction of the Southern Sydney Freight Line (SSFL).

The works will begin at 6am on Saturday and continue until 10pm on Sunday. The works will involve the installation of girders at Cabramatta Creek Bridge. The equipment used at this worksite will be crane, franna, elevated work platform, delivery vehicle and hand tools and day makers.



We appreciate everyone's patience while we build this important project.

Further information

For further information and any enquiries, please call the 24 Hour Information and Complaints Line **1800 182 543**



Or Email ssfl@artc.com.au or visit www.ssfl.artc.com.au

Translating & Interpreting Service – Please Phone: 131 450