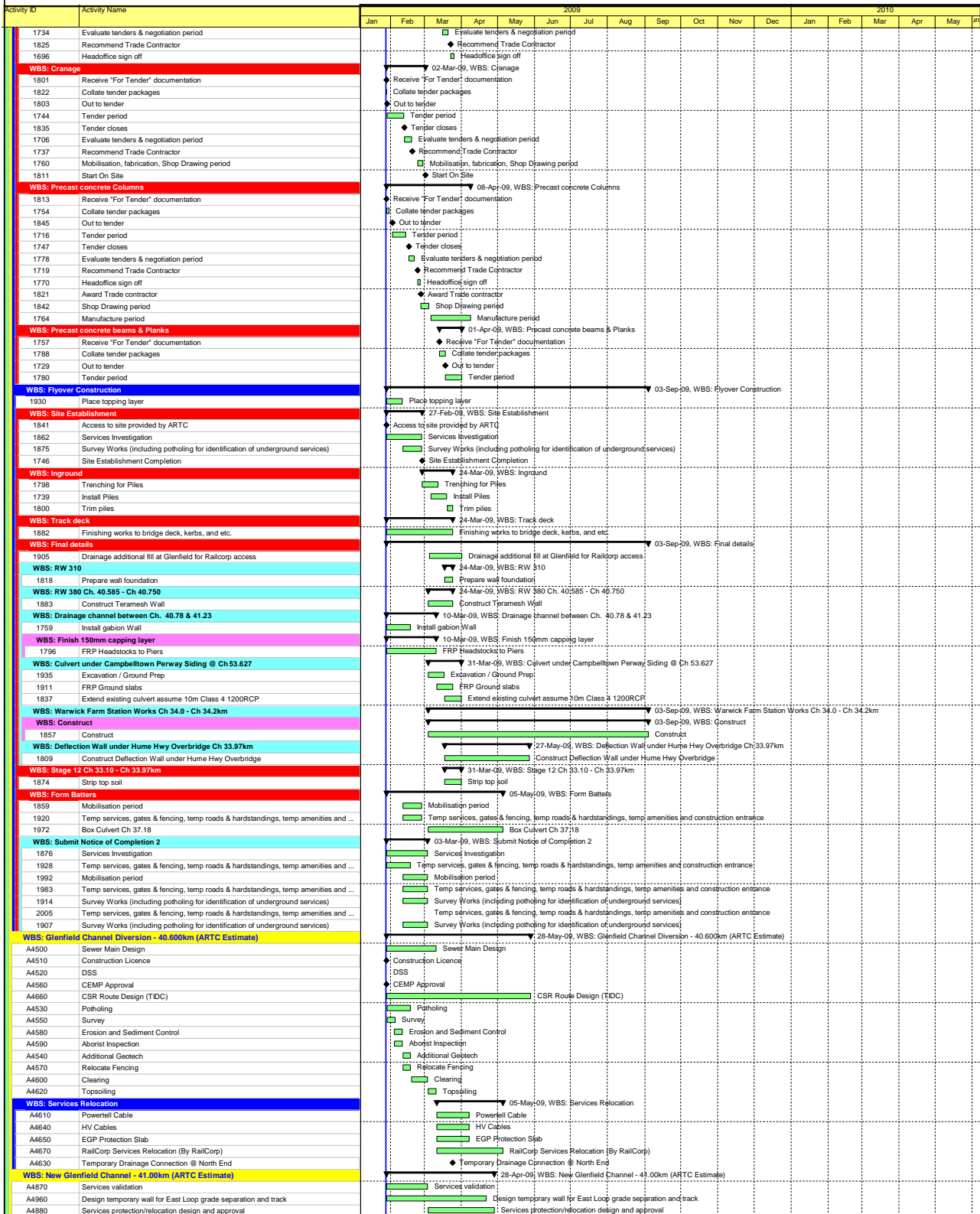


█ Actual Work ◆ Milestone
█ Remaining Work ▼ Summary



Activity ID	Activity Name	2009												2010				
		Jan	Feb	Mar	Apr	May	Jun	Jul	Aug	Sep	Oct	Nov	Dec	Jan	Feb	Mar	Apr	May
WBS: Woodbrook Rd Br (6 span) - 37.60km		07-Apr-09, WBS: Woodbrook Rd Br (6 span) - 37.60km																
A3970	Locate UG services	Locate UG services																
A3980	Makesafe/relocate UG services complete (by ARTC)	Makesafe/relocate UG services complete (by ARTC)																
A3990	Sheetpile around existing abutments	Sheetpile around existing abutments																
A4000	Millpark 2 Piling works to piers & abutments	Millpark 2 Piling works to piers & abutments																
A4010	FRP pile caps (4 no.)	FRP pile caps (4 no.)																
A4020	FRP abutments (inc. Wingwalls)	FRP abutments (inc. Wingwalls)																
A4030	FRP Columns (Possession)	FRP Columns (Possession)																
WBS: track kilometres 37.62km to 38.99km		01-Dec-09, WBS: track kilometres 37.62km to 38.99km																
WBS: Sth - Zone 6 Ch 37.62 - Ch 38.99km		01-Dec-09, WBS: Sth - Zone 6; Ch 37.62 - Ch 38.99km																
WBS: Stage 1 Ch 37.62 - Ch 38.99km		12-May-09, WBS: Stage 1 Ch 37.62 - Ch 38.99km																
1256	Contract Award	Contract Award																
WBS: Site Establishment		12-May-09, WBS: Site Establishment																
1343	Access to site provided by ARTC	Access to site provided by ARTC																
1264	Services Investigation	Services Investigation																
1308	Site Establishment Completion	Site Establishment Completion																
1325	RSW Wall construction (623 m3)	RSW Wall construction (623 m3)																
WBS: RW 365 Nth Casula Station		17-Mar-09, WBS: RW 365 Nth Casula Station																
1290	Prepare wall foundation	Prepare wall foundation																
WBS: Earthworks		17-Mar-09, WBS: Earthworks																
WBS: Zone 5a Earthworks CH37.60 to CH38.60 N. of Casula Station		17-Mar-09, WBS: Earthworks																
1284	Clearing and grubbing	Clearing and grubbing																
WBS: Stage 14 Ch 38.99 - Ch 39.38km		01-Dec-09, WBS: Stage 14 Ch 38.99 - Ch 39.38km																
1331	Contract Award	Contract Award																
WBS: Site Establishment		03-Mar-09, WBS: Site Establishment																
1318	Access to site provided by ARTC	Access to site provided by ARTC																
1249	Services Investigation	Services Investigation																
1330	Mobilisation period	Mobilisation period																
WBS: Contract Award		04-Mar-09, WBS: Contract Award																
1392	Survey Works (including potholing for identification of underground services)	Survey Works (including potholing for identification of underground services)																
1383	Site Establishment Completion	Site Establishment Completion																
WBS: Bridgeworks @ Glenfield Ck Bridge Ch 38.99 - Ch 39.38km		01-Dec-09, WBS: Bridgeworks @ Glenfield Ck Bridge Ch 38.99 - Ch 39.38km																
1345	Construct bridgeworks	Construct bridgeworks																
WBS: Earthworks		16-Apr-09, WBS: Earthworks																
A1360	Locate UG Services	Locate UG Services																
A1370	Set up Traffic Control	Set up Traffic Control																
A1380	Tree Clearing	Tree Clearing																
A1390	Strip Topsoil	Strip Topsoil																
A1400	Compact Foundation	Compact Foundation																
A1410	Makesafe/relocate UG Services (Completed by ARTC)	Makesafe/relocate UG Services (Completed by ARTC)																
A1420	Excavate to underside of structural fill layer	Excavate to underside of structural fill layer																
A1430	Place and Compact Structural Fill	Place and Compact Structural Fill																
WBS: Bridgeworks at Glenfield Creek Bridge 38.99km to 39.38km		03-Apr-09, WBS: Bridgeworks at Glenfield Creek Bridge 38.99km to 39.38km																
A2310	Set up environmental controls	Set up environmental controls																
A2320	Locate UG Services	Locate UG Services																
A2330	Tree Clearing and Site preparation	Tree Clearing and Site preparation																
A2340	Makesafe/relocate UG Services Complete (By ARTC)	Makesafe/relocate UG Services Complete (By ARTC)																
A2350	Construct Piling Platform	Construct Piling Platform																
A2360	Piling Works (Possession)	Piling Works (Possession)																
A2370	FRP Pile Caps	FRP Pile Caps																
A2380	FRP Columns	FRP Columns																
WBS: track kilometres 39.38km to 41.62km		03-Sep-09, WBS: track kilometres 39.38km to 41.62km																
WBS: Sth - Zone 7 (Stage 2) Ch 39.38 - Ch 41.62km		10-Jun-09, WBS: Sth - Zone 7 (Stage 2) Ch 39.38 - Ch 41.62km																
WBS: Stage 2 Ch 39.38 - Ch 41.62km		10-Jun-09, WBS: Stage 2 Ch 39.38 - Ch 41.62km																
WBS: Site Establishment		04-Mar-09, WBS: Site Establishment																
1286	Access to site provided by ARTC	Access to site provided by ARTC																
1267	Services Investigation	Services Investigation																
1338	Mobilisation period	Mobilisation period																
1259	Temp services, gates & fencing, temp roads & hardstandings, temp amenities and ...	Temp services, gates & fencing, temp roads & hardstandings, temp amenities and construction entrance																
1350	Survey Works (including potholing for identification of underground services)	Survey Works (including potholing for identification of underground services)																
1361	Site Establishment Completion	Site Establishment Completion																
WBS: Utilities Protection Works		24-Mar-09, WBS: Utilities Protection Works																
1393	Culvert protection to cables from Glenfield Substation	Culvert protection to cables from Glenfield Substation																
WBS: Ethane Gas Main Protection Works		24-Mar-09, WBS: Ethane Gas Main Protection Works																
1365	Bored Piles	Bored Piles																
WBS: Culverts & Drainage		10-Jun-09, WBS: Culverts & Drainage																
1334	Culvert, 600 dia @ 39.76	Culvert, 600 dia @ 39.76																
1348	Cess Drain (450 dia half round pipe)	Cess Drain (450 dia half round pipe)																
1269	FRC Drain (450 dia half round pipe)	FRC Drain (450 dia half round pipe)																
1360	New Drainage pits	New Drainage pits																
1371	Gross Pollutant Traps	Gross Pollutant Traps																
1391	Backfill to RW 380	Backfill to RW 380																
1381	Culvert, 500 dia @ Ch 40.435	Culvert, 500 dia @ Ch 40.435																
WBS: Channel Diversion @ Ch. 40.22-Ch 40.29		07-Apr-09, WBS: Channel Diversion @ Ch. 40.22-Ch 40.29																
1306	Excavation for 3000 wide open channel	Excavation for 3000 wide open channel																
1287	Gabion wall 2mH x 1mW x 15mL	Gabion wall 2mH x 1mW x 15mL																
1358	Bedding, cobblestone lining	Bedding, cobblestone lining																
WBS: Culvert @ Ch 40.285-Ch 40.330		31-Mar-09, WBS: Culvert @ Ch 40.285-Ch 40.330																
1344	2.1 x 2.1 x 3.6 RCBC including backfill	2.1 x 2.1 x 3.6 RCBC including backfill																
1370	Excavation for culvert	Excavation for culvert																
1401	Headwall and apron for 1.5x1.5 RCBC	Headwall and apron for 1.5x1.5 RCBC																
WBS: Drainage Channel Ch 40.330- Ch40.45		01-Apr-09, WBS: Drainage Channel Ch 40.330- Ch40.45																
1316	Excavation	Excavation																
1297	Bedding, cobblestone lining	Bedding, cobblestone lining																
WBS: Glenfield Substation Deviation		08-Apr-09, WBS: Glenfield Substation Deviation																
WBS: Drainage Channel Ch. 40.450-Ch 40.540		08-Apr-09, WBS: Drainage Channel Ch. 40.450-Ch 40.540																
1354	Excavation	Excavation																
WBS: Drainage Channel Ch. 40.585-Ch 40.734		10-Feb-09, WBS: Drainage Channel Ch. 40.585-Ch 40.734																
1415	Gabion walls	Gabion walls																
WBS: Culvert @ Ch 40.734 - Ch. 40.780		07-Apr-09, WBS: Culvert @ Ch 40.734 - Ch. 40.780																
1384	Pile Wall (600mm dia piles @ 1100 ctrs)	Pile Wall (600mm dia piles @ 1100 ctrs)																
1431	Excavation	Excavation																
1472	3.6 x 1.8 x 2.4 box culvert	3.6 x 1.8 x 2.4 box culvert																
WBS: Connection to existing drainage system @ Ch. 40.755		24-Mar-09, WBS: Connection to existing drainage system @ Ch. 40.755																
1356	Excavation	Excavation																
WBS: RW 350 Part B (12,493 m3 fill)		31-Mar-09, WBS: RW 350 Part B (12,493 m3 fill)																
WBS: Complete handrail and drainage		31-Mar-09, WBS: Complete handrail and drainage																
1455	New Activity	New Activity																
1386	Strip top soil	Strip top soil																

Actual Work ◆ Milestone
 Remaining Work ▼ Summary



█ Actual Work ◆ Milestone
█ Remaining Work ▼ Summary



Activity ID	Activity Name	2009												2010						
		Jan	Feb	Mar	Apr	May	Jun	Jul	Aug	Sep	Oct	Nov	Dec	Jan	Feb	Mar	Apr	May	Jun	
WBS: Station works at Warwick Farm and Casula																				
WBS: Casula Station Works																				
WBS: Pre-construction																				
332	Receive full construction drawings																			
344	Locate services																			
325	Survey																			
328	Obtain lift drawings (inc 4 days allowance for analysis)																			
343	Establish site																			
326	Relocation of Services (by ARTC)																			
337	Hoardings																			
349	Order Structural Steel Shafts (inc. shop drawing approval)																			
340	Order Precast Stair deck																			
341	Order precast footbridge																			
WBS: West lift (Up)																				
363	Structural steel shaft																			
WBS: Warwick Farm Station Works																				
WBS: Pre-Construction																				
452	Receive full construction drawings																			
464	Services Search																			
445	Survey																			
446	Relocate Services (by ARTC)																			
448	Obtain lift drawings (inc 4 days allowance for analysis)																			
469	Order Structural Steel Shafts (inc. shop drawing approval)																			
450	Order Precast Stair deck																			
461	Order precast footbridge																			
463	Establish Site																			
457	Hoardings																			
WBS: Carpark (General works)																				
473	Carpark Works (Drainage, K&G, asphalt and fencing)																			
WBS: Far East lift																				
455	Piling (4)																			
456	Excavation																			
WBS: East lift																				
466	Piling (4)																			
477	Excavation																			
WBS: West lift (Up)																				
487	Piling (4)																			
478	Excavation																			
WBS: Far East new stairs																				
497	Piling (8)																			
488	Excavation																			
509	Binding																			

Actual Work ◆ Milestone
 Remaining Work ▼ Summary