

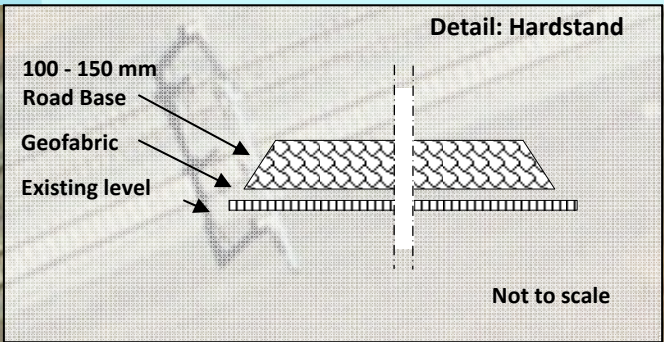


SSFL Overview
Fairfield Community Liaison Group

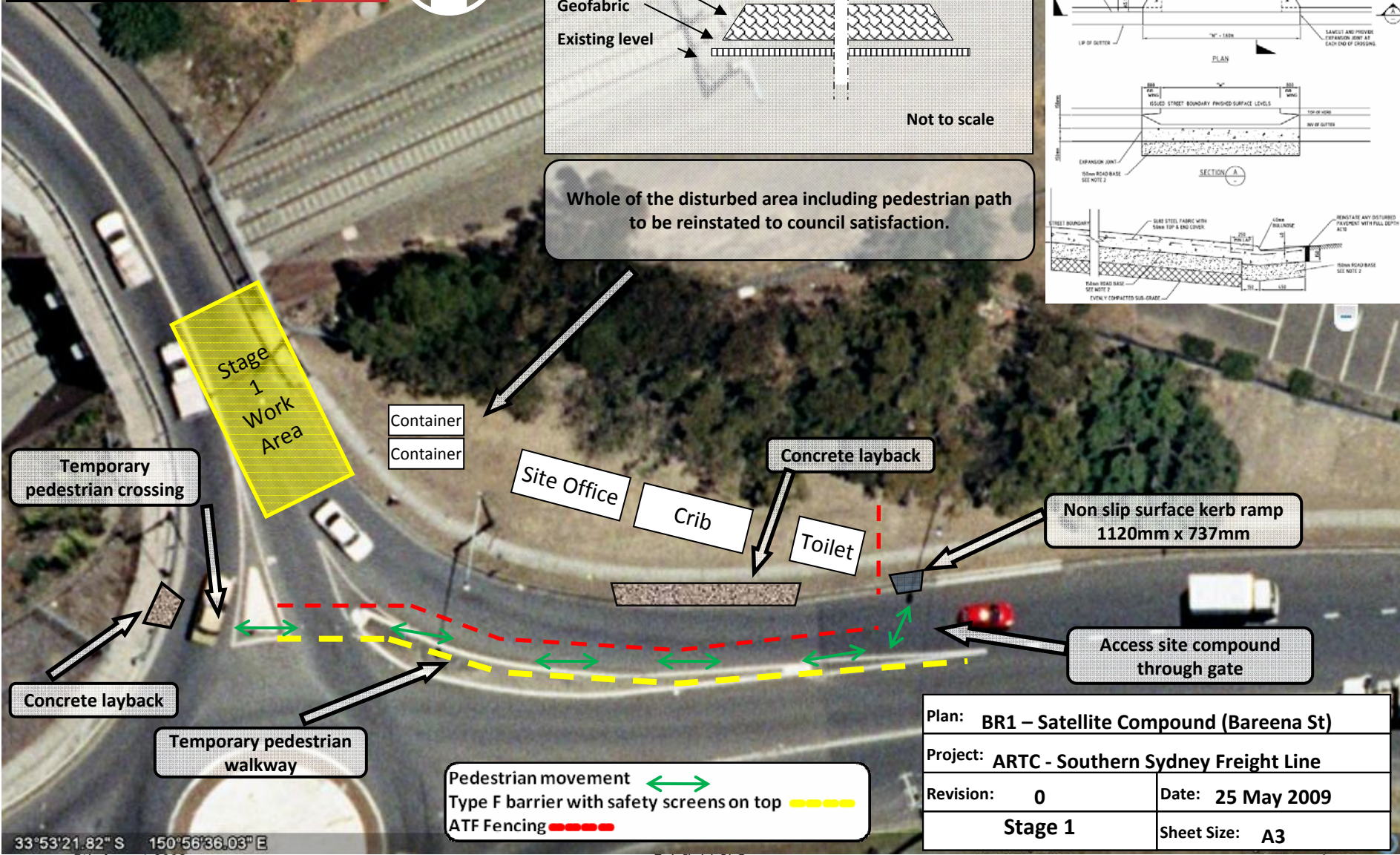
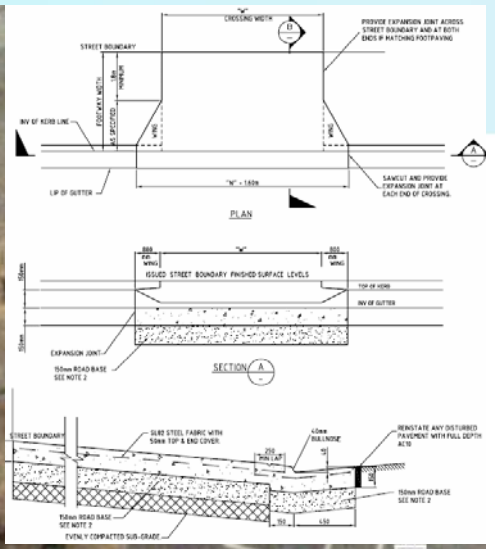
- Traffic control established on Sandal Crescent and Prospect Road using traffic signals. Generally low traffic flows and alternate flow working well.
- Bridge substructures due for completion Thursday 7 August 2009.
- Erection of concrete bridge girders on Carramar side will be complete Thursday 6 August 2009. Semi-trailers will be parked in Sandal crescent.
- Erection of concrete bridge girders on Canley Vale side will be complete Thursday 13 August 2009. Semi-trailers will be parked in Fraser Road.
- Late August there will be several semi-trailer deliveries of precast deck panels and pedestrian bridge structural steel items.
- Rail truss span over Prospect Creek to be installed during track possession 12/13 September 2009.

- The TCP will be implemented on 11th August 2009.
- The TCP submitted for Bareena St Bridge works has been modified in consultation with Fairfield council to allow east and west bound movement into First Ave. (addressed community concerns)
- Establishment of the Site compound on the cnr of Bareena St and Pevensey St has been postponed. Establishment of the compound is governed by resolution in relocation of the optical fibre cable running under the bridge.
- The bridge shall be constructed in 2 halves (North and South), with the northern side of the bridge commencing firstup
- The bridge work area shall be cordoned off with Concrete jersey barriers and Site compound with Temporary fencing.
- Thru Pedestrian travel shall be maintained past the compound, with pedestrians diverted across the roadway in front of the site (the northern pedestrian footpath will be temporarily closed off until the new span is constructed)
- The duration of works hence changed traffic conditions are expected to take 5-6months.

ARENCO



Whole of the disturbed area including pedestrian path to be reinstated to council satisfaction.

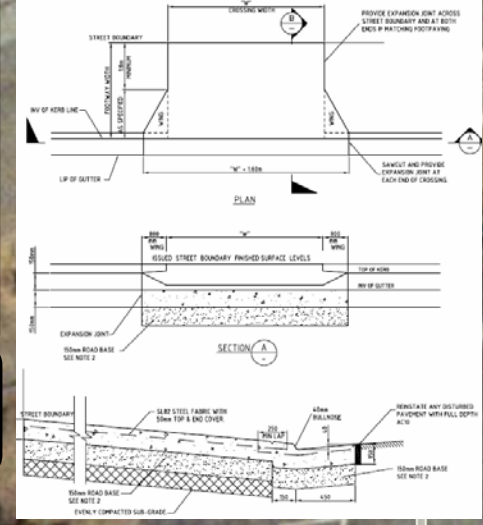
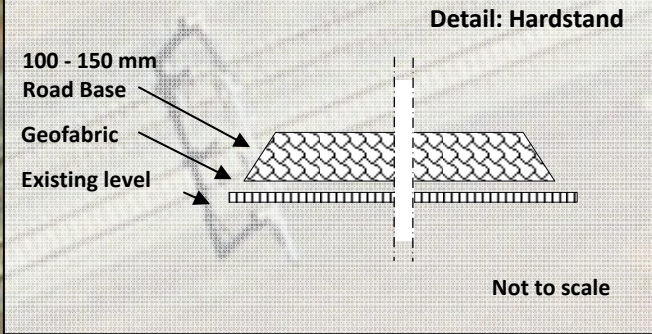


Plan: BR1 – Satellite Compound (Barena St)	
Project: ARTC - Southern Sydney Freight Line	
Revision: 0	Date: 25 May 2009
Stage 1	Sheet Size: A3

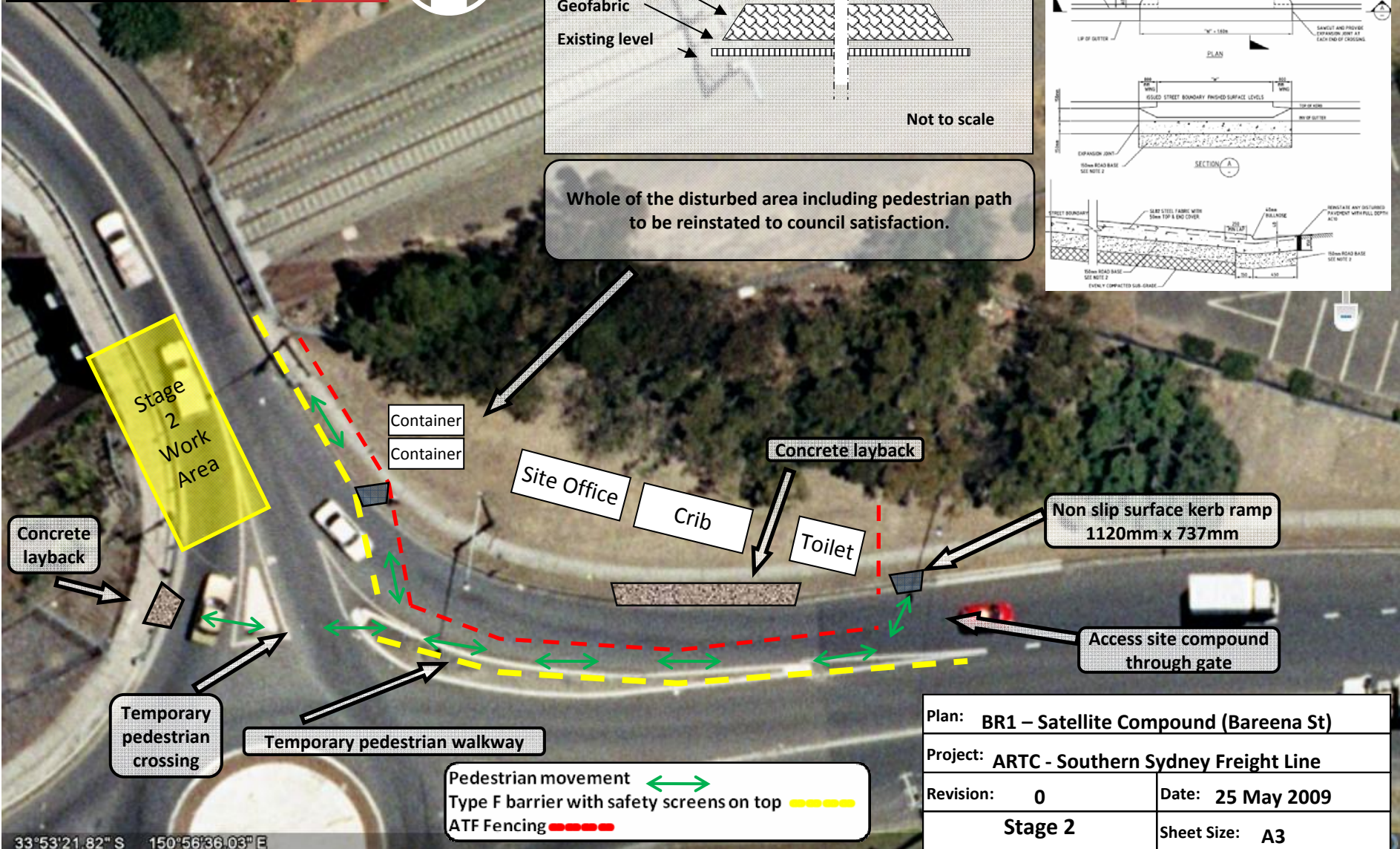
33°53'21.82" S 150°56'36.03" E
5th August 2009

Fairfield CLG

ARENCO



Whole of the disturbed area including pedestrian path to be reinstated to council satisfaction.



Plan: BR1 – Satellite Compound (Barena St)	
Project: ARTC - Southern Sydney Freight Line	
Revision: 0	Date: 25 May 2009
Stage 2	Sheet Size: A3

33°53'21.82" S 150°56'36.03" E
5th August 2009

Fairfield CLG

- Continue earthworks and stormwater drainage lines from Bareena St. to Longfield St.
- Continue potholing for services from Cabramatta Station to Sussex St.
- Commence earthworks and retaining wall works from Junction St. to Sussex St.
- Commence foundation treatments between Sussex St. Bridge and Cabramatta Creek Bridge
- Continue piling works and foundation works for Sussex St. Bridge
- Commence superstructure works to Sussex St. Bridge
- Continue and complete superstructure works for Cabramatta Creek Bridge
- Installation of bridge girders for Cabramatta Creek Bridge

- Work has commenced to construct the footings which will hold the precast walls. Access was restricted but not interrupted.
- Gartner Rose (during WE09 - times to follow) are planning on craning in the precast walls and roof. During this work there will be some interruptions to access through the underpass, however, these interruptions will be minimal.
- The required construction methodology of the floor of the underpass will likely require the closure of the underpass nearest to Sandal Crescent for 2 days.

The pedestrian underpass at Carramar Station will be closed intermittently on Saturday and closed for this work on Sunday.

- Services searches and potholing to identify services has commenced and the survey is complete.
- Final design is required before construction can commence. The initial stage of construction will be car parking at the extremities both north and south.
- Works has commence on new parking on the far north of Broomfield St in the next fortnight (north of Longfield Street area)
- As soon as we have DoP Approval (and following completion of Area 1 Car Park), we will move into Area Three - Area immediately around the station and that will involve relocation of the bus stop, relocation of disabled parking and erection of hoardings and safety fences.

Carcoola Street Footbridge:

- Work will commence on the erection of temporary set of stairs
- During this weekend work, there will be no pedestrian access, alternative arrangements for pedestrian movements are still being progressed, detail to follow.
- Work times are detailed in OOH Package below.

- Site establishment is now complete and construction has begun. The piles have been bored and poured and the blinding slab laid. Work during July will involve the formation of the deflection walls and the pouring of concrete to those walls.
- There will be no impact on users of the station.

Carramar Station - Services

6am - 6pm Saturday and Sunday

Relocating cable pits and raising existing cable pits

Equipment: hand tools, backhoe and dumpy

Carramar Station

2am Saturday - 2am Monday

Installation of 250mm infill precast walls and precast underpass extension

Equipment: crane, scaffold, scissor lifts

The pedestrian underpass at Carramar Station will be closed intermittently on Saturday and closed for this work on Sunday.

Horsley Drive

6am - 6pm Saturday and Sunday

Relocate cable pit and cable routes to existing equipment

Prospect Creek Bridge

6am - 6pm Saturday and Sunday

Lower and protect cable pit and relocate cable pit and cable routes at signal.

Equipment: hand tools, backhoe, dumpy

Carcoola Street - (4th Ave Bridge)

2am Friday - 2am Monday

Scaffold temporary stair erection

Equipment: crane, scaffold scissor, scissor lifts

Carramar - Cabramatta (Bareena Street)

6am to 6pm Saturday and Sunday

Raise Cable pit and lower and protect local cable route



OOH 29th - 31st August 2009

Bareena Street Overbridge

6am Saturday - 10pm Sunday

Anchor Installation, surveying abutment area.

Equipment: elevated work platform, rubber tracked, hand tools



Weekend 11 - 12th and 3th September 2009

Villawood Station

6am Saturday - 6pm Sunday

Install new poles and install track crossing cables

Equipment: Elevated work platform x 2, light vehicle and hand tools

Prospect Creek Bridge

6pm Friday - 6am Monday

Installation of side bridge trusses and associated tie-down support beams

Equipment: 400 ton all terrain slew crane, 2 x delivery trucks, 2 x tip trucks, 1 x cherry picker, hand tools, 2 x flood lights

Bareena Street Overbridge

6am to 4pm Saturday and 6am to 4pm Sunday

Anchor Installation

Equipment: Elevated work platform, rubber tracked, anchor rig, hand tools, 2 x flood lights

Cabramatta to Warwick Farm

7am - 5pm Saturday and 7am - 5pm Sunday

Culvert works, piling works and retaining walls

Equipment: Excavator, mobile cranes, trucks, concrete trucks, concrete pumps, roller, piling rigs and hand tools.

Weekend 12 is the next package of works coming up:

19th and 20th September 2009

Any question on the Out of Hours Works?

Next meeting:

Wednesday 2nd September 2009



Contacts:

- Complaints Hotline: 1800 182 543
- Email address: ssfl@artc.com.au
- Website: www.ssfl.artc.com.au