



Out of Hours Work: Chester Hill
Bankstown Community Liaison Group

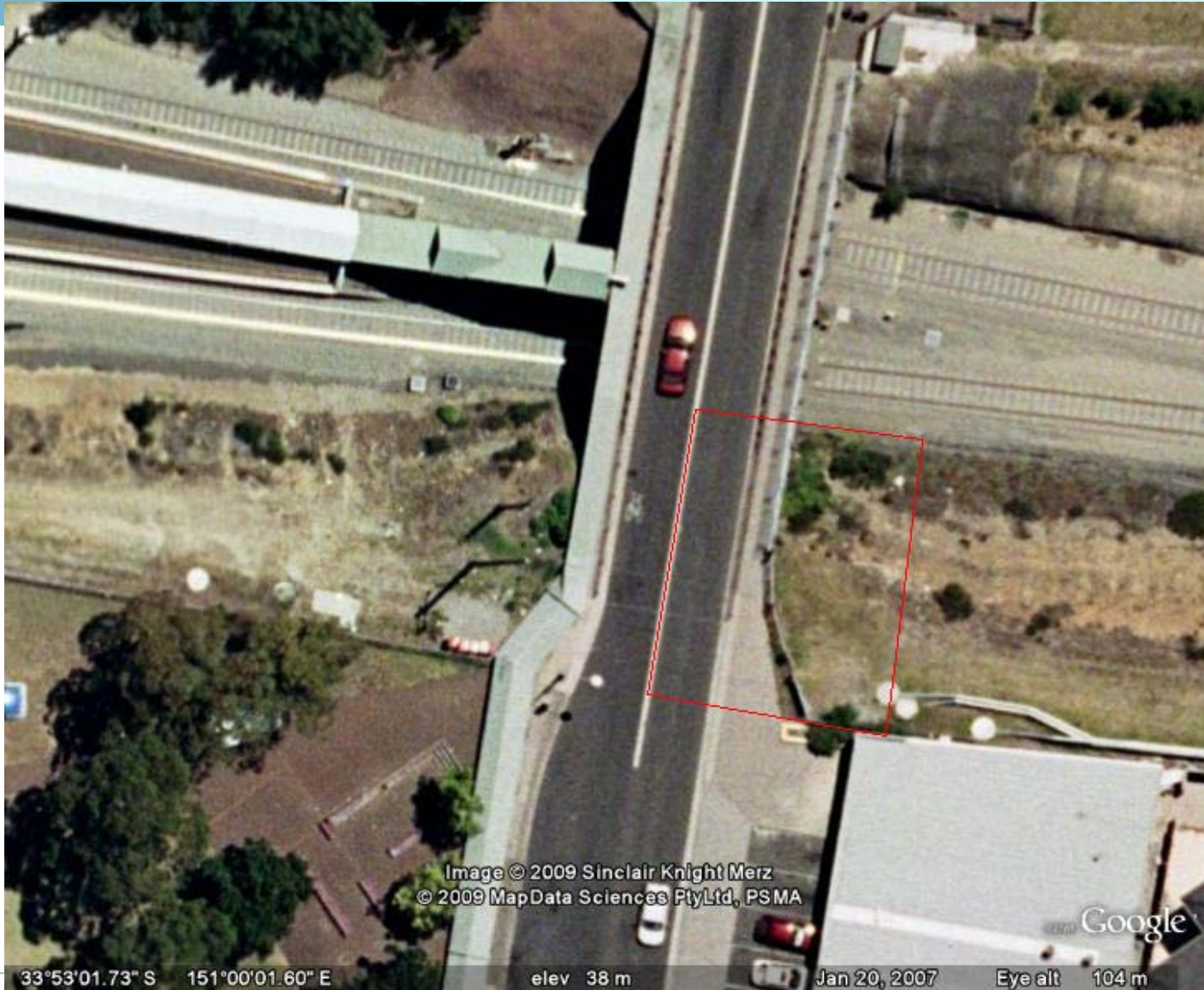
- This work must be done at night to utilise the midnight to dawn period where trains do not run.
- During this time we will be drilling around the abutment of the Chester Hill Road bridge to prepare for future works.

- Dates inserted once confirmed
- The works will take place between 12.55 am and 4.35 am.

The work will be noisy and mitigations will be implemented:

- Monitoring
- Individual briefings
- Specific notifications
- Letterbox drops to affected area
- Media adverts in both The Torch and the Canterbury Bankstown Express

- Installation of brick anchors through southern abutment. Two men and ladder will be on main south line. Note: core drilling will be conducted from road side.
- Installation of bolted formwork and hording to east wing wall.
- 20t Franna crane employed to lower formwork in place will be located on the existing overbridge. Traffic management will be in place to manage the plant movements



33°53'01.73" S 151°00'01.60" E elev 38 m Jan 20, 2007 Eye alt 104 m

- These works form part of the construction of the Southern Sydney Freight Line (SSFL).
- The SSFL is a 36 kilometre dedicated freight line between Macarthur and Sefton and the new track is within the existing rail corridor.
- The SSFL will allow passenger and freight services to operate independently, freeing up passenger lines for improved services and providing more capacity for freight trains on the dedicated lines.

ARTC and the team at Southern Sydney Freight Line appreciate everyone's patience while we build this important project for Sydney, NSW and the nation.

- COMPLAINTS HOTLINE: 1800 182 543
- Prue Hodgson, ARTC Community Liaison Manager SSFL
- Email: ssf@artc.com.au
- Website: www.ssfl.artc.com.au